

Plastic Cupla BC Type Valveless

For low pressure air piping

Working pressure

0.07
0.07 MPa
(0.7 kgf/cm²)

Valve structure



Straight through

Applicable fluid



Air

- To connect, just push the plug into the socket.
- Plastic makes this ideal for use in environment prone to rusting.
- Compact and light weight for easy handling.
- Valveless construction gives more stable flow.



Before use, please be sure to read "Safety Guide" described at the end of this book and "Instruction Sheet" that comes with the products.

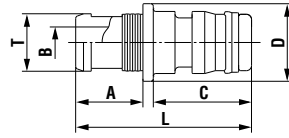
Specifications

Body material	Plastic			
Size	1/4", 3/8" hose			
Pressure unit	MPa	kgf/cm ²	bar	PSI
Working pressure	0.07	0.7	0.7	10.2
Seal material	Seal material	Mark	Working temperature range	Remarks
Working temperature range	Nitrile rubber	NBR (SG)	-20°C to +50°C	Standard material

Models and Dimensions

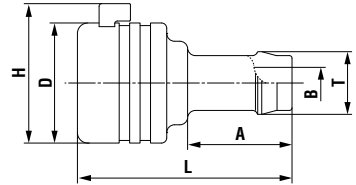
WAF : WAF stands for width across flats.

Plug PH type (Hose barb)



Model	Application (Hose)	Mass (g)	Dimensions (mm)					
			L	C	A	øB	øT	øD
BC-2PH	1/4"	1.8	41	19	17	4	8.5	14
BC-3PH	3/8"	2	34	19	13	6	10.9	15

Socket SH type (Hose barb)



Model	Application (Hose)	Mass (g)	Dimensions (mm)					
			L	A	øB	øT	øD	H
BC-2SH	1/4"	5.6	38	17	4	8.5	23	(26.5)
BC-3SH	3/8"	6	41	20	6	12	23	(26.5)

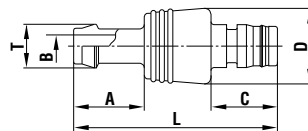
Specifications

Body material	Plastic			
Size	3/8" hose			
Pressure unit	MPa	kgf/cm ²	bar	PSI
Working pressure	0.07	0.7	0.7	10.2
Seal material	Seal material	Mark	Working temperature range	Remarks
Working temperature range	Nitrile rubber	NBR (SG)	-20°C to +50°C	Standard material

Models and Dimensions

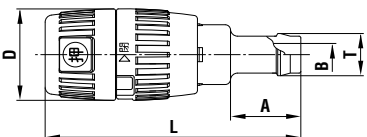
WAF : WAF stands for width across flats.

Plug PH type (Hose barb)



Model	Application (Hose)	Mass (g)	Dimensions (mm)					
			L	C	A	øD	øT	øB
BCV-3PH	3/8"	10	(58)	19	20	21	12	6

Socket SH type (Hose barb)



Model	Application (Hose)	Mass (g)	Dimensions (mm)				
			L	øD	A	øT	øB
BCC-3SH	3/8"	25	(73)	26	20	12	6

Before use, please be sure to read "Safety Guide" described at the end of this book and "Instruction Sheet" that comes with the products.

Plastic Cupla BCC Type with Flow Controller

For low pressure air piping

Working pressure

0.07
0.07 MPa
(0.7 kgf/cm²)

Valve structure



One-way shut-off

Applicable fluid



Air

- To connect, just push the plug into the socket.
- Plug with built-in automatic shut-off valve.
- Socket with handy flow controller.
- Plastic makes this ideal for use in environments prone to rusting.
- Compact and light weight for excellent handling.

