

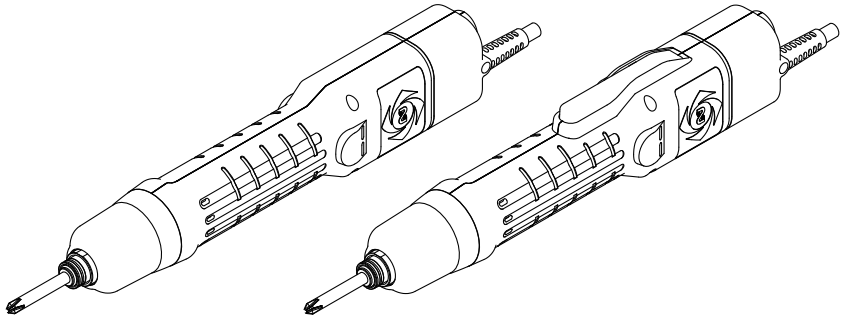
# INSTRUCTION MANUAL

Professional tool ELECTRIC SCREWDRIVER

## delvo

Model: DLV30A/DLV45A/DLV70A-SPC(AD) Series

## Parts List



This document is for the special repair operator.  
General users should never disassemble the product.

When repair of the tool or part replacement becomes necessary, contact the retailer where you purchased the tool.

- Please read manual carefully before you attempt to use your tool so that you may use it properly and safely.
- Due to continuous product development/improvement the specifications and configurations in this document are subject to change without prior notice.

Manufactured by.

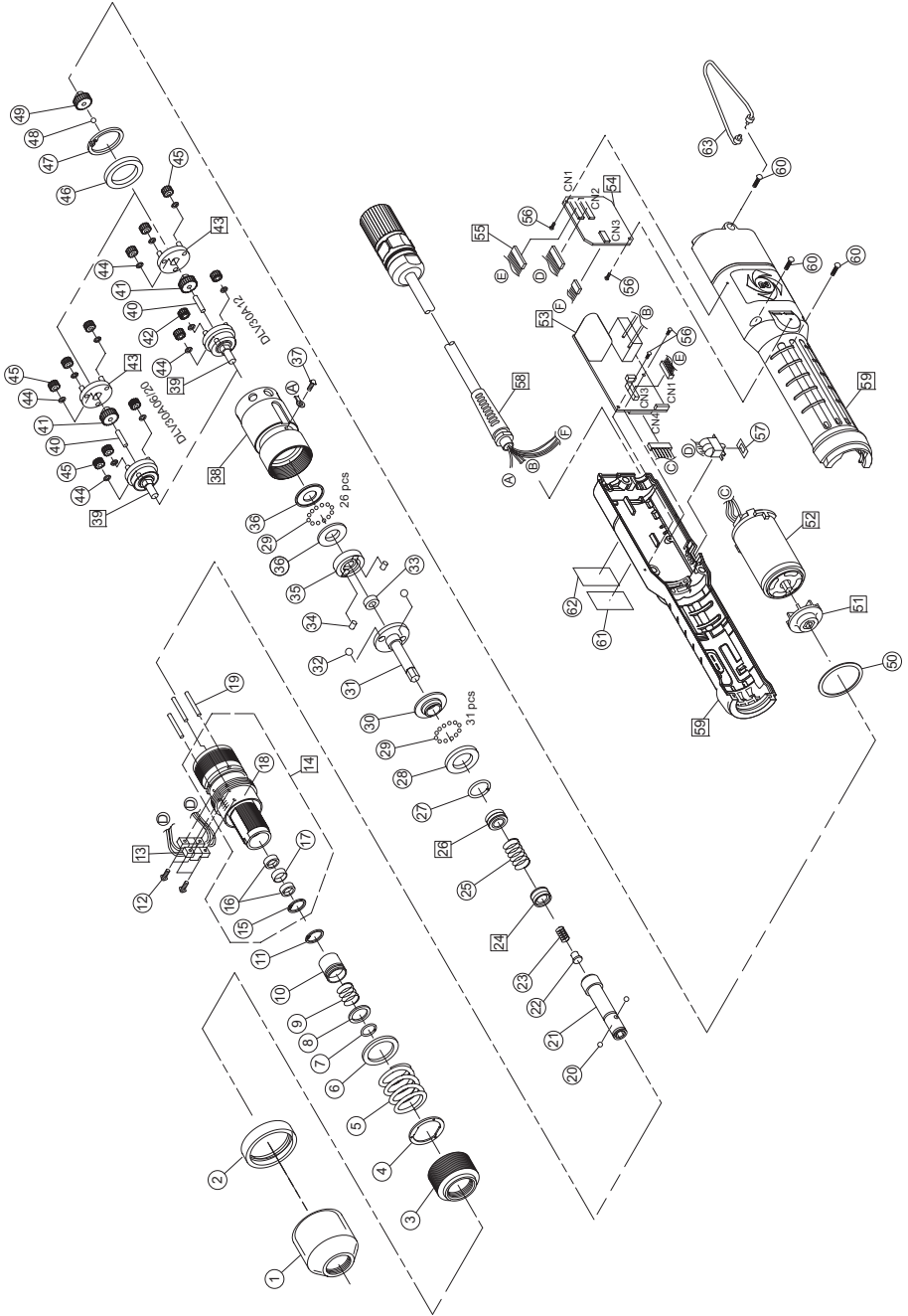
**NITTO KOHKI CO., LTD.** 9-4, Nakaikegami 2-chome, Ohta-ku, Tokyo, 146-8555, Japan

Tel : +81-3-3755-1111 Fax : +81-3-3753-8791

(Original Instructions)

TV07849-0 12/2017

# EXPLODED VIEW (DLV30A06P / DLV30A12P / DLV30A20P)

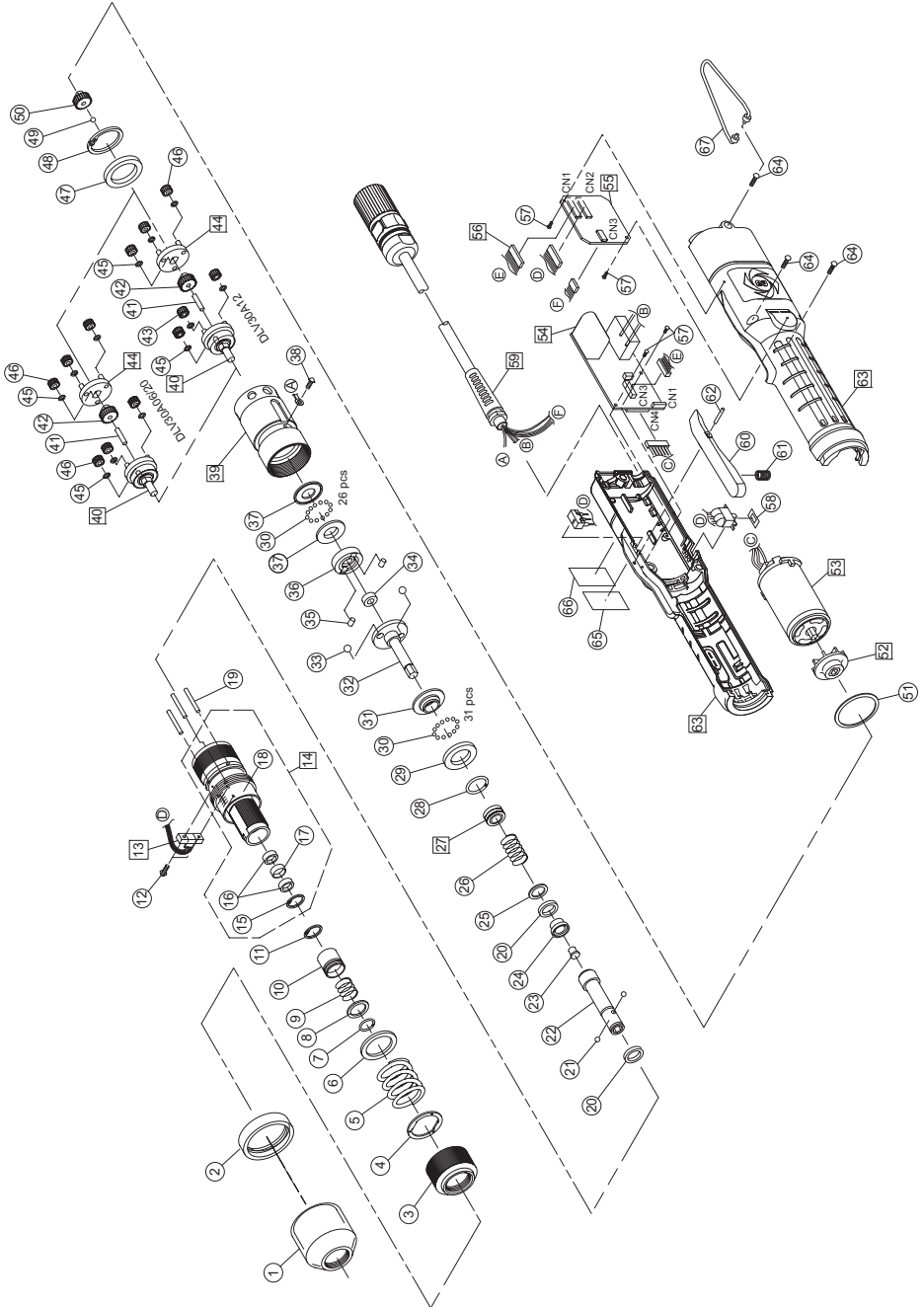


# PARTS LIST (DLV30A06P / DLV30A12P / DLV30A20P)

No.	Parts Name	Parts No.	Q'ty
1	Torque Adjustment Ring Cover	TV05143	1
2	Coupling Yellow (DLV30A06)	TV05581	1
	Coupling Blue (DLV30A12)	TV07445	1
	Coupling Red (DLV30A20)	TV05149	1
	Torque Adjustment Ring	TV04534	1
3	Torque Adjustment Ring	TV04534	1
4	Spring Plate Assembly	TD04385	1
5	Clutch Spring (High Torque Spring)	TV04593	1
	Clutch Spring (Low Torque Spring: Accessories)	TV05146	1
6	Plate	TV05123	1
7	Stop Ring	TV06619	1
8	Holder Collar	TV05124	1
9	Holder Spring	TV00356	1
10	Holder Clamp	TV05126	1
11	Stop Ring	LP10494	1
12	Screw M2.6×8L	TV04553	4
13	Sensor Assembly	TD08217	1
14	Clutch Case Assembly	TD05195	1
15	Stop Ring	TV05254	1
16	Needle Bearing	TV06101	2
17	Collar	TV06102	1
18	Clutch Case	TV05252	1
19	Roller Pin Dia. 2.5×21.8L	TV04543	3
20	Steel Ball Dia. 3 (HEX 5 mm Type)	TP15767	2
	Steel Ball Dia. 2.381 (HEX 6.35 mm Type)	CP20000	2
21	Bit Holder (HEX 5 mm Type)	TV05127	1
	Bit Holder (HEX 6.35 mm Type)	TV05165	1
22	Stopper	TV05256	1
23	Push Spring	TV05255	1
24	Magnet Plate F ASSY	TD07347	1
25	Spring	TV04665	1
26	Brake Magnet Assembly	TD05403	1
27	Stop Ring	TV07367	1
28	Thrust Plate F	TV07363	1
29	Steel Ball Dia. 2	TV00121	57
30	Cam Ring	TV07364	1
31	Cam Guide	TV05145	1
32	Steel Ball Dia. 5	TP15428	2
33	Spacer	TV04751	1
34	Roller Pin Dia. 3.5×5L	TV04538	2
35	Cam	TV04433	1
36	Thrust Plate	TV07366	2
37	Screw M2.6×4L	TV00438	1
38	Gear Case Assembly (DLV30A12)	TD05043	1
	Gear Case Assembly (DLV30A06/ DLV30A20)	TD05075	1

No.	Parts Name	Parts No.	Q'ty
39	Gear Base A Assembly (DLV30A06)	TD04386	1
	Gear Base A Assembly (DLV30A12)	TD05070	1
	Gear Base A Assembly (DLV30A20)	TD05071	1
40	Roller Pin Dia. 3×13.8L	TV04592	1
41	Spindle Gear 11 (DLV30A06)	TV06023	1
	Spindle Gear 19 (DLV30A12)	TV05125	1
	Spindle Gear 23 (DLV30A20)	TV05258	1
42	Idle Gear 14 (DLV30A12)	TV07342	3
43	Gear Base B Assembly (DLV30A06)	TD04135	1
	Gear Base B Assembly (DLV30A12)	TD05110	1
	Gear Base B Assembly (DLV30A20)	TD05111	1
44	Spacer	TV00147	6
45	Idle Gear 19 (DLV30A06)	TV07344	6
	Idle Gear 17 (DLV30A12)	TV07343	3
	Idle Gear 13 (DLV30A20)	TV07335	6
46	Washer	TV04289	1
47	Stop Ring	TV00140	1
48	Steel Ball Dia. 3	TP15767	1
49	Motor Gear 11 (DLV30A06)	TV07347	1
	Motor Gear 13 (DLV30A12)	TV07346	1
	Motor Gear 23 (DLV30A20)	TV07345	1
50	Washer	TV04670	1
51	Fan Assembly	TD08156	1
52	Motor Assembly	TD05404	1
53	Control Base Assembly	TD08333	1
54	Board Assembly for Signal	TD08443	1
55	Harness Assembly	TD05316	1
56	Tapping Screw 2×4L	TV07410	4
57	Insulated Film for Switch	TV07409	1
58	Cord Assembly	TD08955	1
59	Frame Handle AB Assembly	TD08160	1
60	Screw M3×12L	TV02746	3
61	Warning Plate		1
62	Rating Plate		1
63	Suspension Bail	TD08220	1

# EXPLODED VIEW (DLV30A06L / DLV30A12L / DLV30A20L)

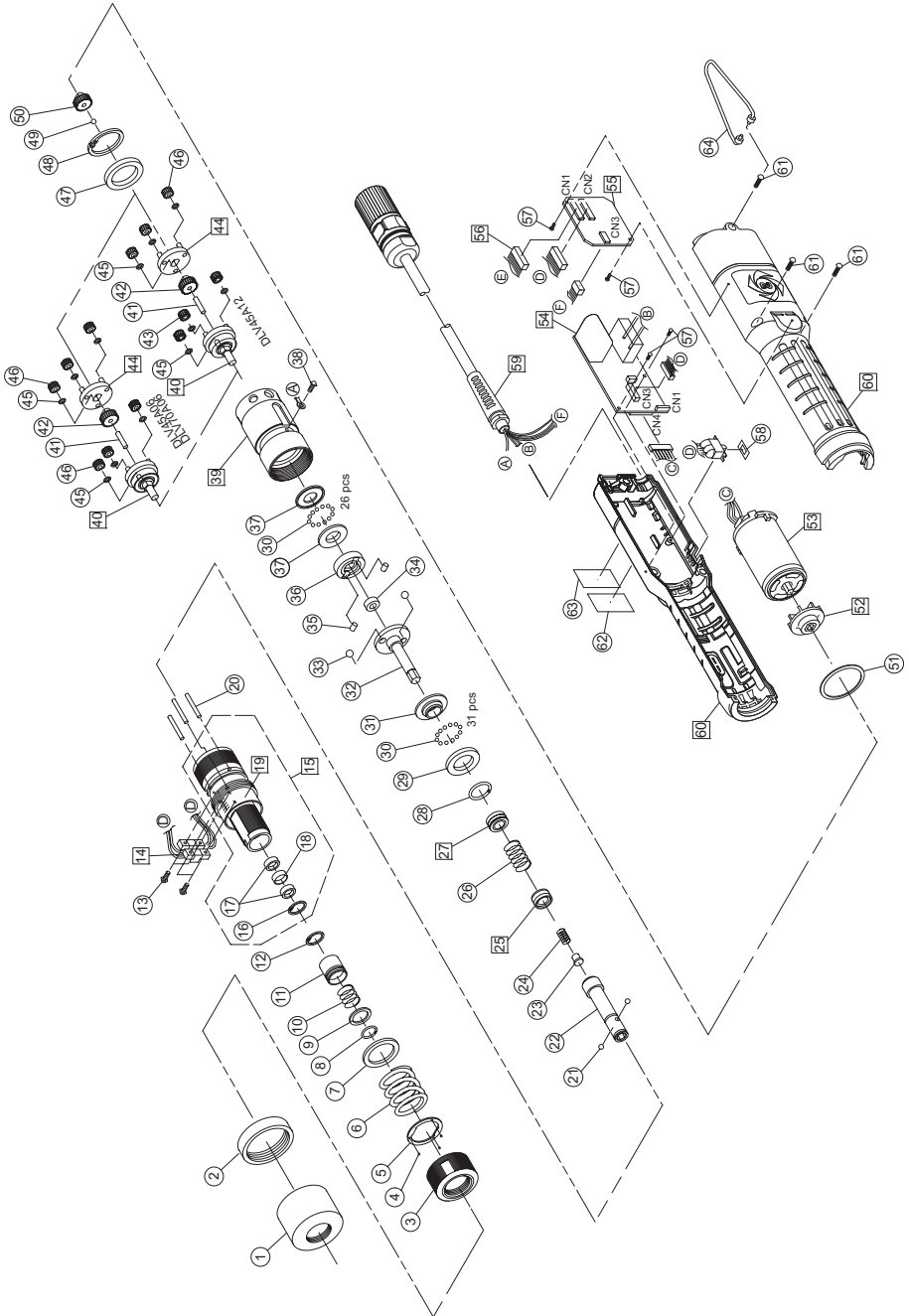


# PARTS LIST (DLV30A06L / DLV30A12L / DLV30A20L)

No.	Parts Name	Parts No.	Q'ty
1	Torque Adjustment Ring Cover	TV05143	1
2	Coupling Yellow (DLV30A06)	TV05581	1
	Coupling Blue (DLV30A12)	TV07445	1
	Coupling Red (DLV30A20)	TV05149	1
	Torque Adjustment Ring	TV04534	1
3	Torque Adjustment Ring	TV04534	1
4	Spring Plate Assembly	TD04385	1
5	Clutch Spring (High Torque Spring)	TV04593	1
	Clutch Spring (Low Torque Spring: Accessories)	TV05146	1
6	Plate	TV05123	1
7	Stop Ring	TV06619	1
8	Holder Collar	TV05124	1
9	Holder Spring	TV00356	1
10	Holder Clamp	TV05126	1
11	Stop Ring	LP10494	1
12	Screw M2.6×8L	TV04553	2
13	Sensor Assembly	TD08225	1
14	Clutch Case Assembly	TD05195	1
15	Stop Ring	TV05254	1
16	Needle Bearing	TV06101	2
17	Collar	TV06102	1
18	Clutch Case	TV05252	1
19	Roller Pin Dia. 2.5×21.8L	TV04543	3
20	Spacer	TV05420	2
21	Steel Ball Dia. 3 (HEX 5 mm Type)	TP15767	2
	Steel Ball Dia. 2.381 (HEX 6.35 mm Type)	CP20000	2
22	Bit Holder (HEX 5 mm Type)	TV05127	1
	Bit Holder (HEX 6.35 mm Type)	TV05165	1
23	Stopper	TV05256	1
24	Magnet Plate F	TV04659	1
25	Spacer	TV04545	1
26	Spring	TV04665	1
27	Brake Magnet Assembly	TD05403	1
28	Stop Ring	TV07367	1
29	Thrust Plate F	TV07363	1
30	Steel Ball Dia. 2	TV00121	57
31	Cam Ring	TV07364	1
32	Cam Guide	TV05145	1
33	Steel Ball Dia. 5	TP15428	2
34	Spacer	TV04751	1
35	Roller Pin Dia. 3.5×5L	TV04538	2
36	Cam	TV04433	1
37	Thrust Plate	TV07366	2
38	Screw M2.6×4L	TV00438	1
39	Gear Case Assembly (DLV30A12)	TD05043	1
	Gear Case Assembly (DLV30A06/ DLV30A20)	TD05075	1

No.	Parts Name	Parts No.	Q'ty
40	Gear Base A Assembly (DLV30A06)	TD04386	1
	Gear Base A Assembly (DLV30A12)	TD05070	1
	Gear Base A Assembly (DLV30A20)	TD05071	1
41	Roller Pin Dia. 3×13.8L	TV04592	1
42	Spindle Gear 11 (DLV30A06)	TV06023	1
	Spindle Gear 19 (DLV30A12)	TV05125	1
	Spindle Gear 23 (DLV30A20)	TV05258	1
43	Idle Gear 14 (DLV30A12)	TV07342	3
44	Gear Base B Assembly (DLV30A06)	TD04135	1
	Gear Base B Assembly (DLV30A12)	TD05110	1
	Gear Base B Assembly (DLV30A20)	TD05111	1
45	Spacer	TV00147	6
46	Idle Gear 19 (DLV30A06)	TV07344	6
	Idle Gear 17 (DLV30A12)	TV07343	3
	Idle Gear 13 (DLV30A20)	TV07335	6
47	Washer	TV04289	1
48	Stop Ring	TV00140	1
49	Steel Ball Dia. 3	TP15767	1
50	Motor Gear 11 (DLV30A06)	TV07347	1
	Motor Gear 13 (DLV30A12)	TV07346	1
	Motor Gear 23 (DLV30A20)	TV07345	1
51	Washer	TV04670	1
52	Fan Assembly	TD08156	1
53	Motor Assembly	TD05404	1
54	Control Base Assembly	TD08333	1
55	Board Assembly for Signal	TD08443	1
56	Harness Assembly	TD05316	1
57	Tapping Screw 2×4L	TV07410	4
58	Insulated Film for Switch	TV07409	1
59	Cord Assembly	TD08955	1
60	Lever	TV07348	1
61	Spring	TV00235	1
62	Roller Pin Dia. 2×13.8L	TV07420	1
63	Frame Handle AB Assembly	TD08160	1
64	Screw M3×12L	TV02746	3
65	Warning Plate		1
66	Rating Plate		1
67	Suspension Bail	TD08220	1

# EXPLODED VIEW (DLV45A06P / DLV45A12P / DLV70A06P)

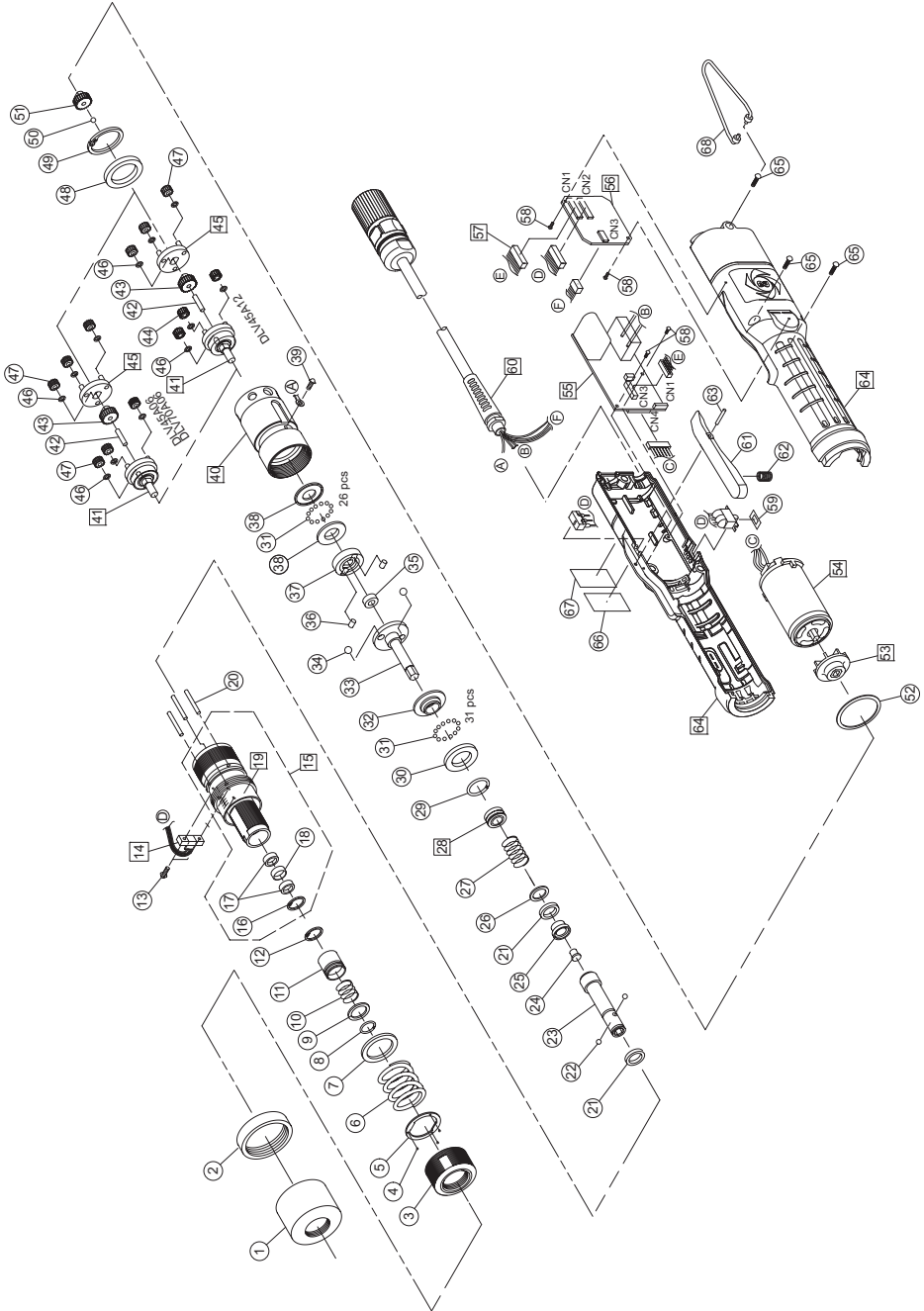


# PARTS LIST (DLV45A06P / DLV45A12P / DLV70A06P)

No.	Parts Name	Parts No.	Q'ty
1	Torque Adjustment Ring Cover	TV05705	1
2	Coupling	TV06062	1
3	Torque Adjustment Ring	TV05703	1
4	Steel Ball Dia. 1.588	TP17155	3
5	Spring Plate	TV05702	1
6	Clutch Spring (DLV45A)	TV05717	1
	Clutch Spring (DLV70A)	TV05718	1
7	Plate	TV05700	1
8	Stop Ring	TV06619	1
9	Holder Collar	TV05124	1
10	Holder Spring	TV00356	1
11	Holder Clamp	TV05126	1
12	Stop Ring	LP10494	1
13	Screw M2.6×8L	TV04553	4
14	Sensor Assembly	TD08217	1
15	Clutch Case Assembly	TD06619	1
16	Stop Ring	TV05254	1
17	Needle Bearing	TV06101	2
18	Collar	TV06102	1
19	Clutch Case Sub Assembly	TD06998	1
20	Roller Pin Dia. 2.5×21.8L	TV04543	3
21	Steel Ball Dia. 2.381 (HEX 6.35 mm Type)	CP20000	2
22	Bit Holder (HEX 6.35 mm Type)	TV05165	1
23	Stopper	TV05256	1
24	Push Spring	TV05255	1
25	Magnet Plate F ASSY	TD07347	1
26	Spring	TV04665	1
27	Brake Magnet Assembly	TD05403	1
28	Stop Ring	TV07367	1
29	Thrust Plate F	TV07363	1
30	Steel Ball Dia. 2	TV00121	57
31	Cam Ring	TV07365	1
32	Cam Guide	TV05699	1
33	Steel Ball Dia. 5	TP15428	2
34	Spacer	TV04751	1
35	Roller Pin Dia. 3.5×5L	TV04538	2
36	Cam	TV04433	1
37	Thrust Plate	TV07366	2
38	Screw M2.6×4L	TV00438	1
39	Gear Case Assembly (DLV45A12)	TD05043	1
	Gear Case Assembly (DLV45A06/ DLV70A06)	TD05075	1
40	Gear Base A Assembly (DLV45A12)	TD05932	1
	Gear Base A Assembly (DLV45A06/ DLV70A06)	TD05933	1
41	Roller Pin Dia. 3×13.8L	TV04592	1
42	Spindle Gear 19 (DLV45A12)	TV05125	1
	Spindle Gear 11 (DLV45A06/ DLV70A06)	TV06023	1

No.	Parts Name	Parts No.	Q'ty
43	Idle Gear 14 (DLV45A12)	TV07342	3
44	Gear Base B Assembly (DLV45A12)	TD05110	1
	Gear Base B Assembly (DLV45A06/ DLV70A06)	TD04135	1
45	Spacer	TV00147	6
46	Idle Gear 17 (DLV45A12)	TV07343	3
	Idle Gear 19 (DLV45A06/ DLV70A06)	TV07344	6
47	Washer	TV04289	1
48	Stop Ring	TV00140	1
49	Steel Ball Dia. 3	TP15767	1
50	Motor Gear 13 (DLV45A12)	TV07346	1
	Motor Gear 11 (DLV45A06/ DLV70A06)	TV07347	1
51	Washer	TV04670	1
52	Fan Assembly	TD08156	1
53	Motor Assembly	TD05404	1
54	Control Base Assembly	TD08333	1
55	Board Assembly for Signal	TD08443	1
56	Harness Assembly	TD05316	1
57	Tapping Screw 2×4L	TV07410	4
58	Insulated Film for Switch	TV07409	1
59	Cord Assembly	TD08955	1
60	Frame Handle AB Assembly	TD08160	1
61	Screw M3×12L	TV02746	3
62	Warning Plate		1
63	Rating Plate		1
64	Suspension Bail	TD08220	1

# EXPLODED VIEW (DLV45A06L / DLV45A12L / DLV70A06L)





# PARTS LIST (DLV45A06L / DLV45A12L / DLV70A06L)

No.	Parts Name	Parts No.	Q'ty
1	Torque Adjustment Ring Cover	TV05705	1
2	Coupling	TV06062	1
3	Torque Adjustment Ring	TV05703	1
4	Steel Ball Dia. 1.588	TP17155	3
5	Spring Plate	TV05702	1
6	Clutch Spring (DLV45A)	TV05717	1
	Clutch Spring (DLV70A)	TV05718	1
7	Plate	TV05700	1
8	Stop Ring	TV06619	1
9	Holder Collar	TV05124	1
10	Holder Spring	TV00356	1
11	Holder Clamp	TV05126	1
12	Stop Ring	LP10494	1
13	Screw M2.6×8L	TV04553	4
14	Sensor Assembly	TD08217	1
15	Clutch Case Assembly	TD06619	1
16	Stop Ring	TV05254	1
17	Needle Bearing	TV06101	2
18	Collar	TV06102	1
19	Clutch Case Sub Assembly	TD06998	1
20	Roller Pin Dia. 2.5×21.8L	TV04543	3
21	Spacer	TV05420	2
22	Steel Ball Dia. 2.381 (HEX 6.35 mm Type)	CP20000	2
23	Bit Holder (HEX 6.35 mm Type)	TV05165	1
24	Stopper	TV05256	1
25	Magnet Plate F	TV04659	1
26	Spacer	TV04545	1
27	Spring	TV04665	1
28	Brake Magnet Assembly	TD05403	1
29	Stop Ring	TV07367	1
30	Thrust Plate F	TV07363	1
31	Steel Ball Dia. 2	TV00121	57
32	Cam Ring	TV07365	1
33	Cam Guide	TV05699	1
34	Steel Ball Dia. 5	TP15428	2
35	Spacer	TV04751	1
36	Roller Pin Dia. 3.5×5L	TV04538	2
37	Cam	TV04433	1
38	Thrust Plate	TV07366	2
39	Screw M2.6×4L	TV00438	1
40	Gear Case Assembly (DLV45A12)	TD05043	1
	Gear Case Assembly (DLV45A06/ DLV70A06)	TD05075	1
41	Gear Base A Assembly (DLV45A12)	TD05932	1
	Gear Base A Assembly (DLV45A06/ DLV70A06)	TD05933	1
42	Roller Pin Dia. 3×13.8L	TV04592	1

No.	Parts Name	Parts No.	Q'ty
43	Spindle Gear 19 (DLV45A12)	TV05125	1
	Spindle Gear 11 (DLV45A06/ DLV70A06)	TV06023	1
44	Idle Gear 14 (DLV45A12)	TV07342	3
45	Gear Base B Assembly (DLV45A12)	TD05110	1
	Gear Base B Assembly (DLV45A06/ DLV70A06)	TD04135	1
46	Spacer	TV00147	6
47	Idle Gear 17 (DLV45A12)	TV07343	3
	Idle Gear 19 (DLV45A06/ DLV70A06)	TV07344	6
48	Washer	TV04289	1
49	Stop Ring	TV00140	1
50	Steel Ball Dia. 3	TP15767	1
51	Motor Gear 13 (DLV45A12)	TV07346	1
	Motor Gear 11 (DLV45A06/ DLV70A06)	TV07347	1
52	Washer	TV04670	1
53	Fan Assembly	TD08156	1
54	Motor Assembly	TD05404	1
55	Control Base Assembly	TD08333	1
56	Board Assembly for Signal	TD08443	1
57	Harness Assembly	TD05316	1
58	Tapping Screw 2×4L	TV07410	4
59	Insulated Film for Switch	TV07409	1
60	Cord Assembly	TD08955	1
61	Lever	TV07348	1
62	Spring	TV00235	1
63	Roller Pin Dia. 2×13.8L	TV07420	1
64	Frame Handle AB Assembly	TD08160	1
65	Screw M3×12L	TV02746	3
66	Warning Plate		1
67	Rating Plate		1
68	Suspension Bail	TD08220	1