

# Setting application for DCC0241X instruction manual

## table of contents

1.	Introduction .....	- 3 -
1 - 1.	Overview .....	- 3 -
2.	Menu screen .....	- 4 -
2 - 1.	Display details .....	- 5 -
3.	CH setting screen.....	- 6 -
3 - 1.	Display details .....	- 7 -
4.	CH PATTERN setting screen.....	- 8 -
4 - 1.	Display details .....	- 9 -
4 - 2.	CH PATTERN registration method .....	- 10 -
5.	COMMON setting screen.....	- 11 -
5 - 1.	Display details .....	- 12 -
6.	Application setting screen.....	- 13 -
6 - 1.	Display details .....	- 14 -

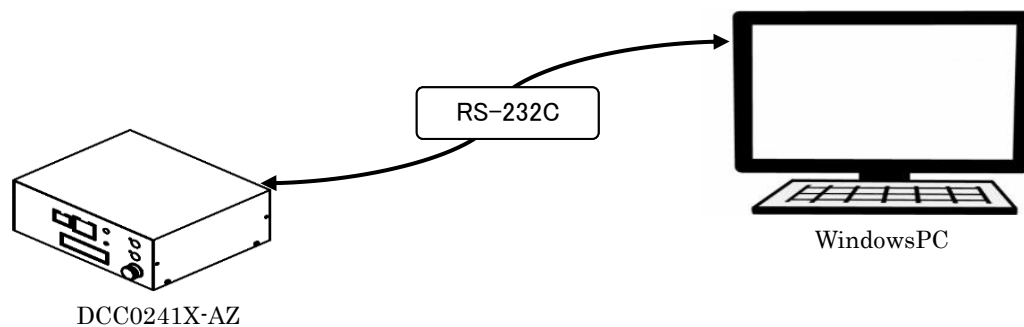
# 1. Introduction

## 1 - 1 . Overview

The setting application for DCC0241X is the controller DCC0241X-AZ (hereinafter referred to as the controller).

Windows application that can be set up via serial communication (RS-232C).

Besides setting, setting data can be saved / read and settings can be obtained from the controller.



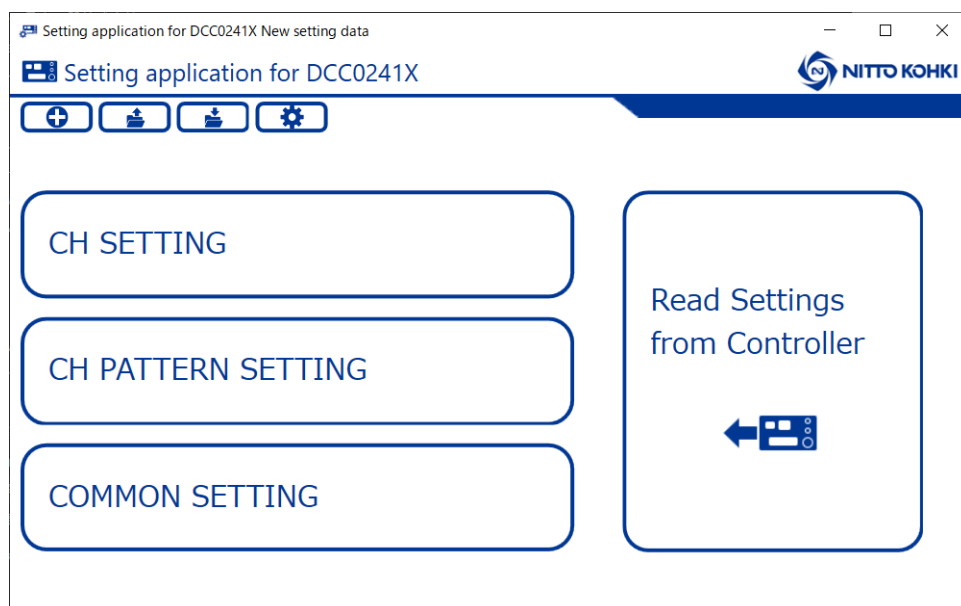
## 2. Menu screen

This is the first screen displayed when the application is launched.

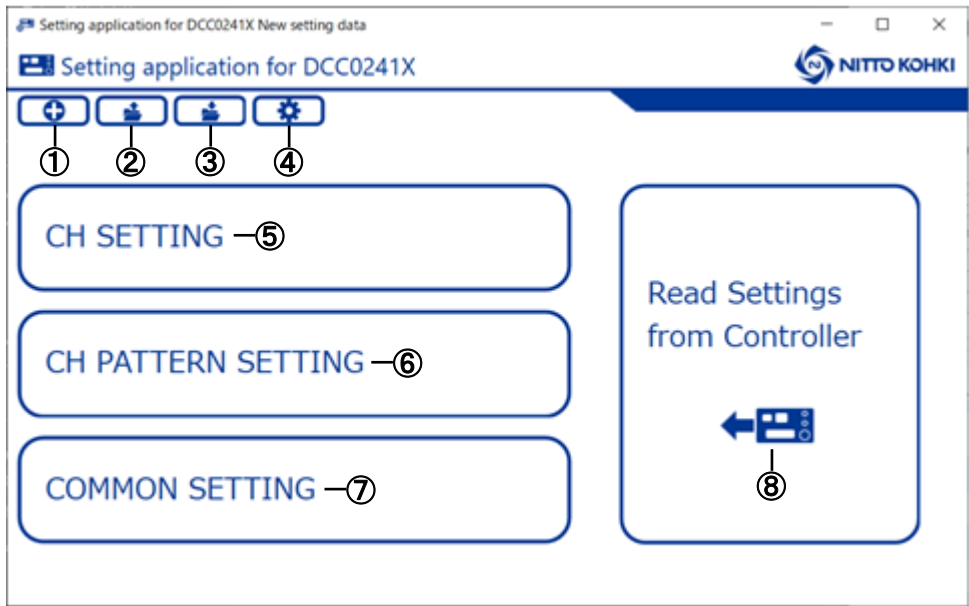
Transition from this screen to each screen.

You can also perform the following operations.

- Create new setting data
- Read setting data file
- Save setting data file
- Setting data acquisition from controller



2 - 1 . Display details



番号	名称	詳細
①	New File	Create new data (default value).
②	Open File	Read the setting data from the file.
③	Save All	Save the setting data to a file.
④	Application Settings	Transition to the application setting screen.
⑤	CH SETTING	Transit to CH setting screen.
⑥	CH PATTERN SETTING	Transit to CH pattern setting screen.
⑦	COMMON SETTING	Read the setting data from the file.
⑧	Read Settings from Controller	Transit to the common setting screen. <div>             Reading from controller...             <div>               CH Setting Reading 115/781             </div> </div>

### 3. CH setting screen

This screen sets the screw tightening conditions for each channel and sends them to the controller.

Select the channel you want to set from the list, and set the screw tightening conditions in the CH-specific setting column.

Setting application for DCC0241X New setting data

CH SETTING

MEASUREMENT

TIME

SIGNAL

CH SELECT

CH1

CH2

CH3

CH4

CH5

CH6

CH7

CH8

ALL CH WRITE

CH1 SETTINGS

NAME

1	Fastening Type	<div><div>SOFT</div><div>HARD</div></div>
2	Count	<div>4</div>

| 3 | Speed | Lv5 |

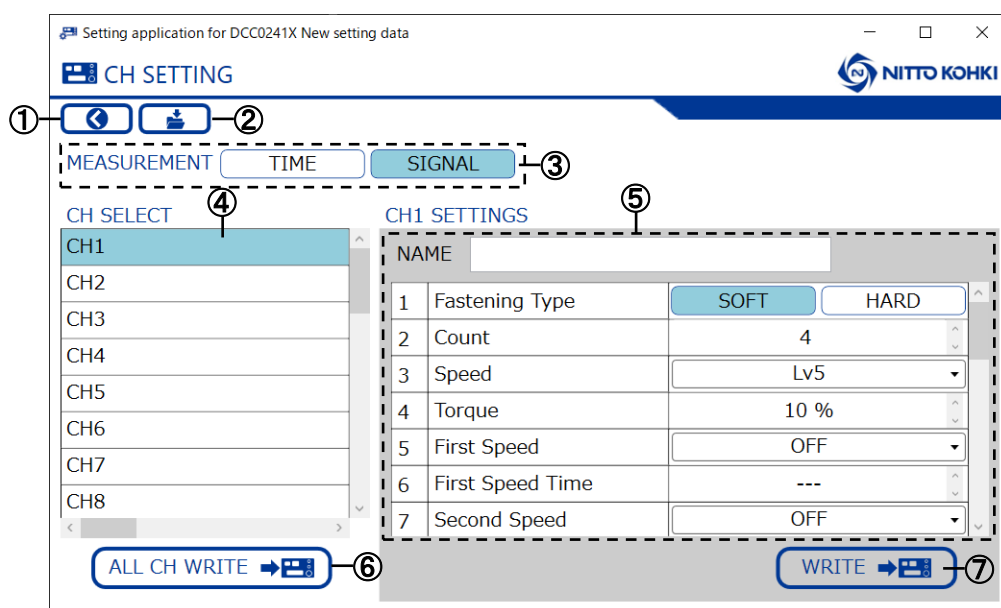
| 4 | Torque | 10 % |




| 5 | First Speed | OFF |

| 6 | First Speed Time | --- |

WRITE

### 3 - 1 . Display details



No.	Name	Details						
①	Back to Menu	Return to the menu screen.						
②	Save File	Save configuration data to a file. If the setting is changed, the icon will change color to call attention. 						
③	MEASUREMENT	Select the method for measuring the set time such as First speed and second speed.						
④	CH SETECT	Displays a list of channels. Select the channel you want to set.						
⑤	CH SETTINGS	Set the CH name and screw tightening conditions for the selected channel. The changed settings are displayed in bold font. If you move the mouse over the setting item name, an explanation will be displayed. <table border="1"> <tr> <td>2</td><td><b>Count</b></td><td>4</td></tr> <tr> <td>3</td><td><b>Speed</b></td><td>Lv5</td></tr> </table>	2	<b>Count</b>	4	3	<b>Speed</b>	Lv5
2	<b>Count</b>	4						
3	<b>Speed</b>	Lv5						
⑥	ALL CH WRITE	Write the setting data of all channels to the controller. The following screen is displayed during communication. <div style="border: 1px solid black; padding: 5px; text-align: center;"> <b>Writing to Contoroller...</b>              CH Setting Writing 62/781         </div>						
⑦	WRITE	Sends the selected channel setting data to the controller. The following screen is displayed during communication. <div style="border: 1px solid black; padding: 5px; text-align: center;"> <b>Writing to Contoroller...</b>              CH Setting Writing 8/27         </div>						

## 4. CH PATTERN setting screen

This is the screen to set each channel pattern (register channel combination) and send it to the controller.

Select the channel pattern you want to set from the list, and set it in the CH pattern setting field.

Setting application for DCC0241X New setting data

CH PATTERN SETTING

CH PATTERN SELECT

CH PATTERN1

CH PATTERN2

CH PATTERN3

CH PATTERN4

CH PATTERN5

CH PATTERN6

CH PATTERN7

CH PATTERN8

CH PATTERN9

ALL Pat. WRITE

CH PATTERN1 SETTING

NAME

Move to

LOOP

1

CH1

2

3

4

5

6

7

8

CH1

CH2

CH3

CH4

CH5

CH6

CH7

CH8

CH9

CH10

CH11

CH12

CH13

CH14

CH15

CH16

CH17

CH18

CH19

CH20

CH21

CH22

CH23

CH24

CH25

CH26

CH27

CH28

CH29

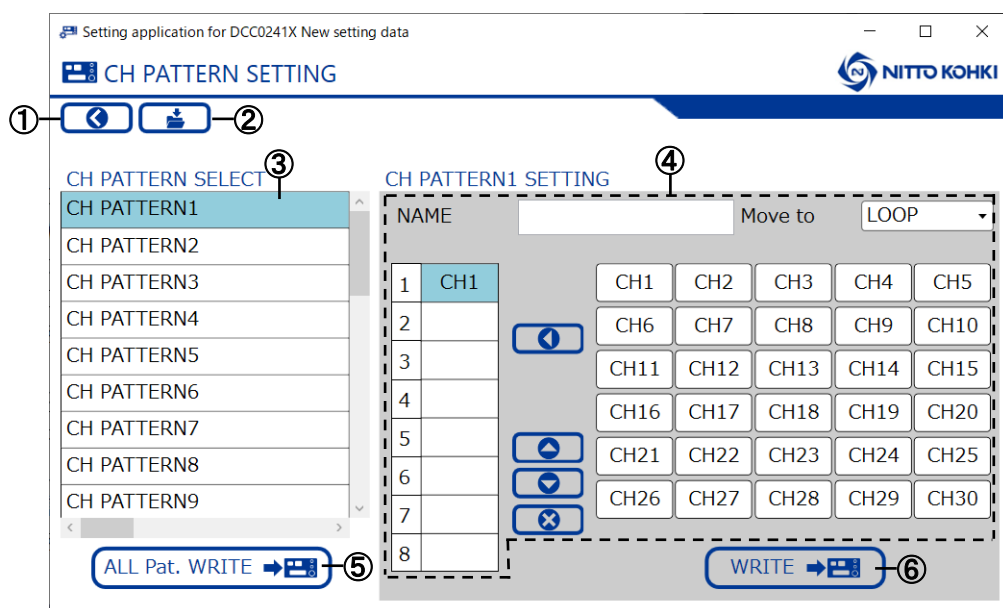
CH30


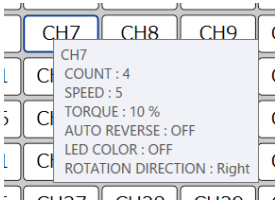
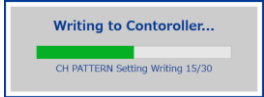

WRITE

- 8 -



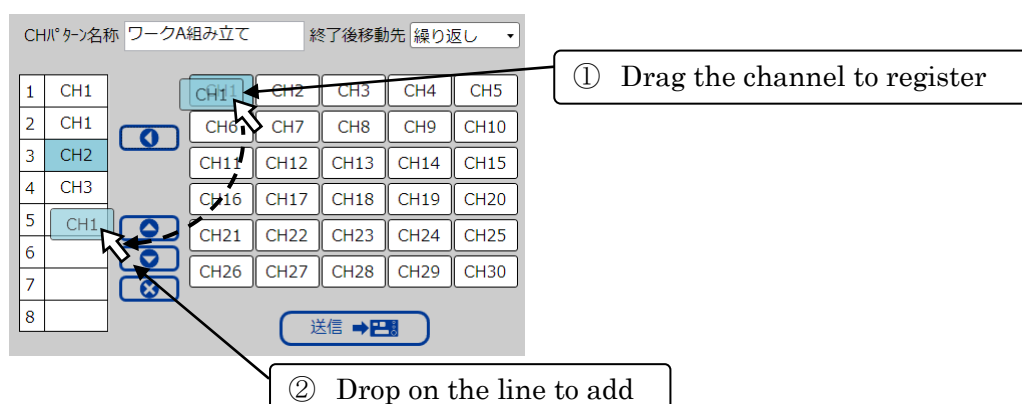
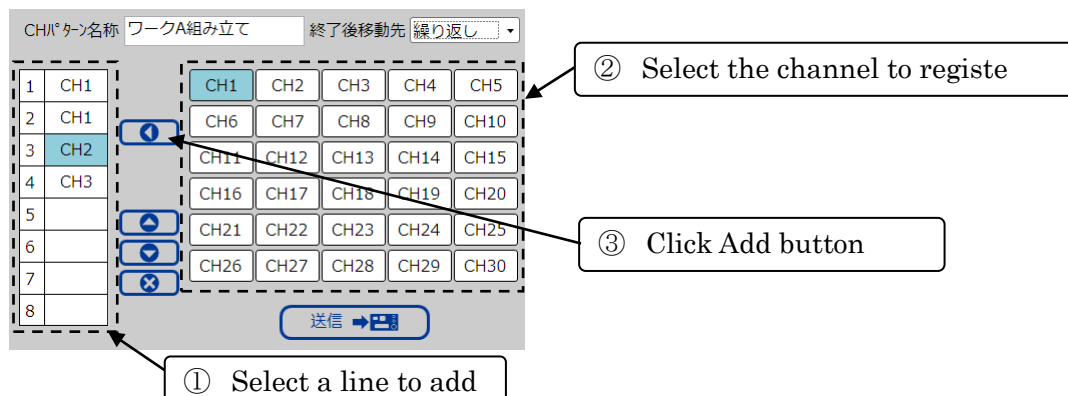
## 4 - 1 . Display details



No.	Name	Details
①	Back to Menu	Return to the menu screen.
②	Save File	Save configuration data to a file. If the setting is changed, the icon will change color to call attention. 
③	CH PATTERN SELECT	A list of CH PATTERNS is displayed. Select the channel pattern you want to set.
④	CH PATTERN SETTINGS	Set the CH PATTERN name and channel registration of the selected channel pattern and the destination to move to after completion. If you move the mouse over a channel, the channel settings will be displayed.  * Registration of No. 1 is mandatory.
⑤	ALL Pat. WRITE	全チャンネルパターンの設定データをコントローラへ送信します。 通信中は下記画面が表示されます。 
⑥	WRITE	選択中のチャンネルパターン設定データをコントローラへ送信します。 通信中は下記画面が表示されます。 

## 4 - 2 . CH PATTERN registration method

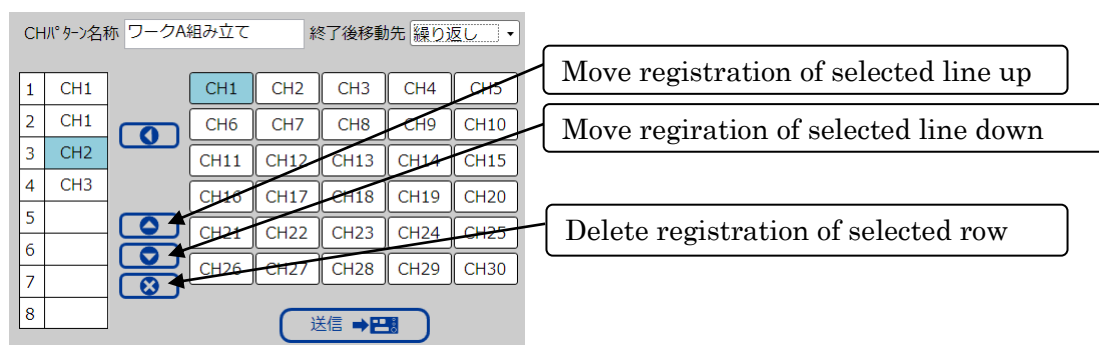
To register a CH PATTERN, select the channel list on the left side, and register it in the No. 1 to No. 8 columns on the right side using the add button or drag and drop operation.



Channel registrations cannot be made after a while.  
It is automatically packed and registered.

Use the up and down buttons to change the order of the registered channels.

If you want to delete, use the delete button.



# 5. COMMON setting screen

This screen is used to make common controller settings and send them to the controller

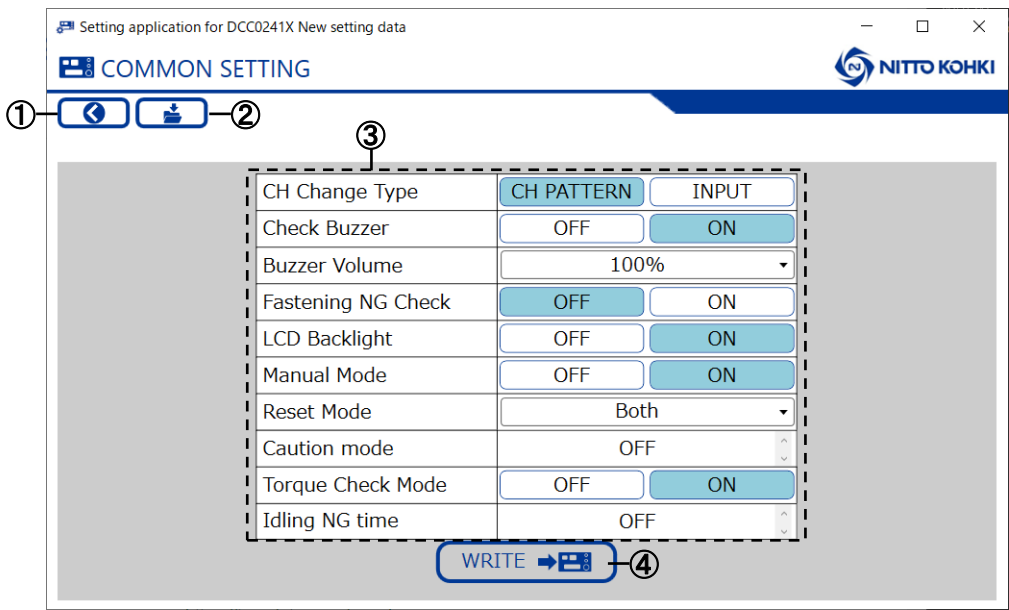
Setting application for DCC0241X New setting data

COMMON SETTING

CH Change Type	<div>CH PATTERN</div>	<div>INPUT</div>
Check Buzzer	<div>OFF</div>	<div>ON</div>
Buzzer Volume	<div>100%</div>	
Fastening NG Check	<div>OFF</div>	<div>ON</div>
LCD Backlight	<div>OFF</div>	<div>ON</div>
Manual Mode	<div>OFF</div>	<div>ON</div>
Reset Mode	<div>Both</div>	
Caution mode	<div>OFF</div>	
Torque Check Mode	<div>OFF</div>	<div>ON</div>
Idling NG time	<div>OFF</div>	

WRITE

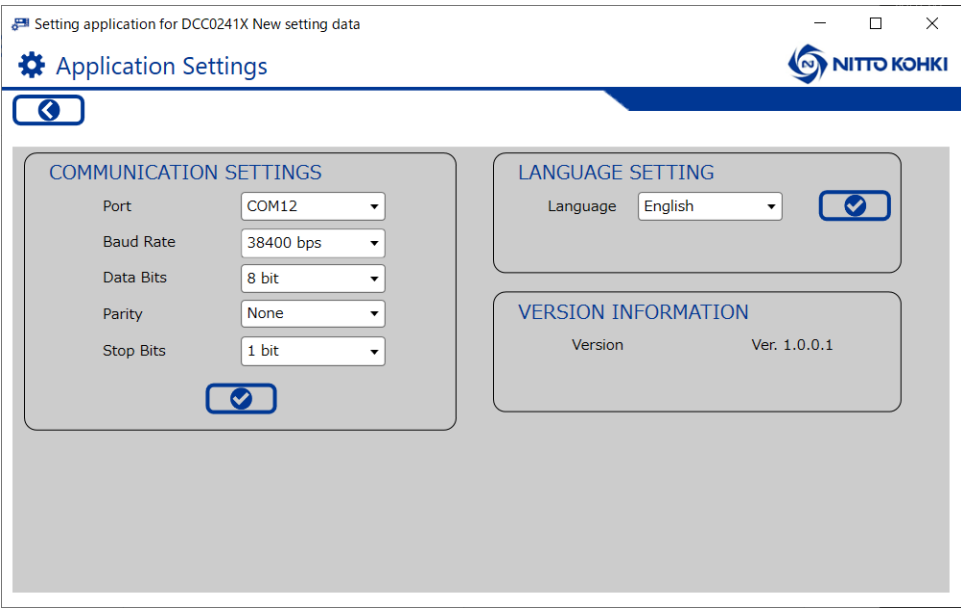
5 - 1 . Display details



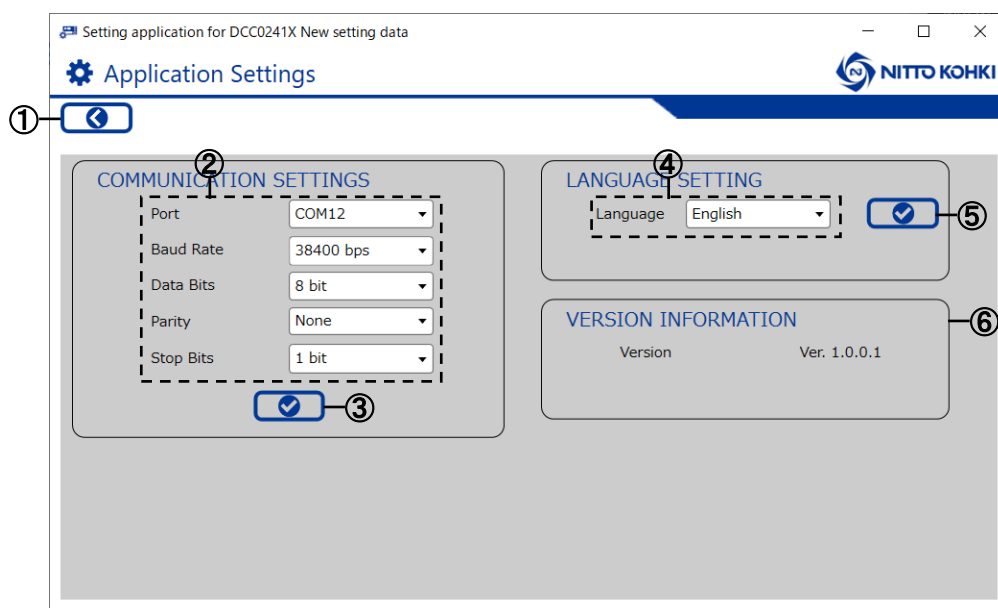
No.	Name	Details
①	Back to Menu	Return to the menu screen.
②	Save File	Save configuration data to a file. If the setting is changed, the icon will change color to call attention.
③	COMMON SETTING	Make common settings for the controller. The changed settings are displayed in bold font. If you move the mouse over the setting item name, an explanation will be displayed.
④	WRITE	Send common setting data to the controller. The following screen is displayed during communication. <div><div>Writing to Contoroller...</div><div><div></div></div><div>Common Setting Writing 6/11</div></div>

## 6. Application setting screen

This screen is used to set communication settings with the controller and language settings.



## 6 - 1 . Display details



No.	Name	Details
①	Back to Menu	Return to the menu screen.
②	COMMUNICATION SETTINGS	Set the communication with the controller (RS-232C). * Do not change the port other than the communication port except in special cases
③	Register COMMUNICATION SETTINGS	Save the communication settings. If you change the setting, the icon will change color to alert you. ✓
④	LANGUAGE SETTING	Set the display language for Japanese / English.
⑤	Register LANGUAGE SETTING	Save the language settings. If the setting is changed, the icon will change color to call attention. ✓
⑥	VERSION INFORMATION	Displays the version of this application.