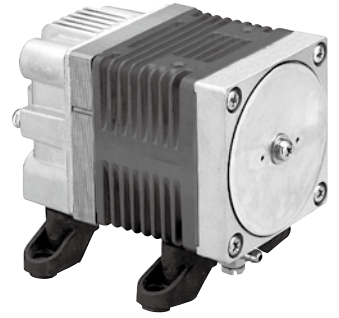


Compressor

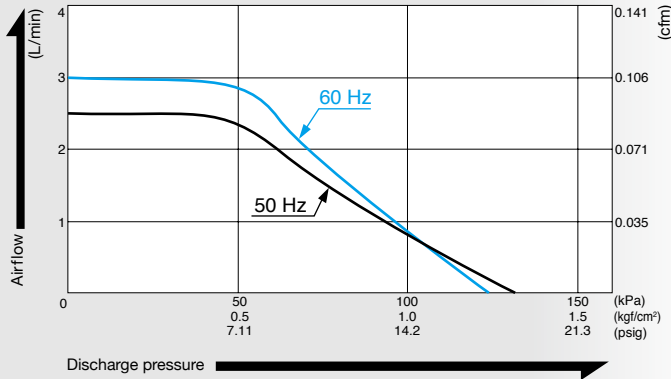
Model **AC0110**

115 V is made to order

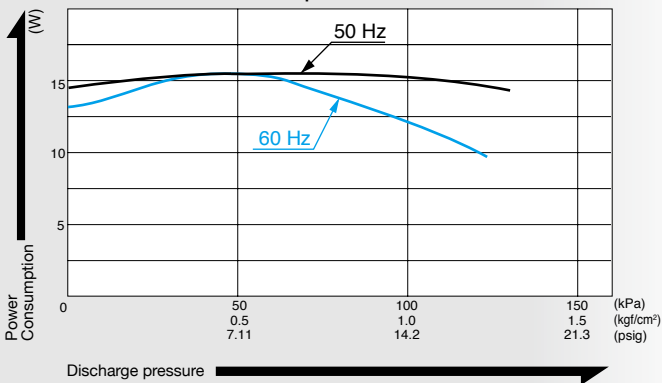


Airflow & Power Consumption

Airflow Characteristics



Power Consumption Characteristics

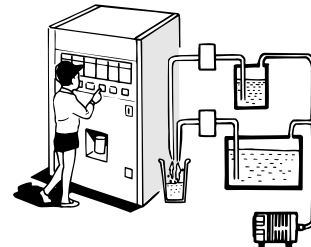


Specifications

Rated Pressure	100 kPa (1.0 kgf/cm ²) 1.0 bar 14.2 psig	
Rated Airflow	0.8 L/min 0.028 cfm	
Maximum Pressure	120 kPa (1.2 kgf/cm ²) 1.2 bar 17.1 psig	
Rated Voltage	115 V AC	230 V AC
Power Consumption	12 W	15 W
Rated Frequency	60 Hz	50 Hz
Rated Performance (MTTF)	4,000 hours	
Outlet	6 mm O.D. hose barb	
Duty Cycle	30 minutes	
Coil Insulation Class	E or its equivalent and B for UL	
Mounting Dimensions	48 (L) x 62 (W) mm 1 - 57/64" (L) x 2 - 7/16" (W)	
Weight	0.7 kg 1.54 Lbs	
Leadwire Length	200 mm 7 - 7/8"	

Application Examples

Automatic Dispenser



External Dimensions (Unit: mm)

