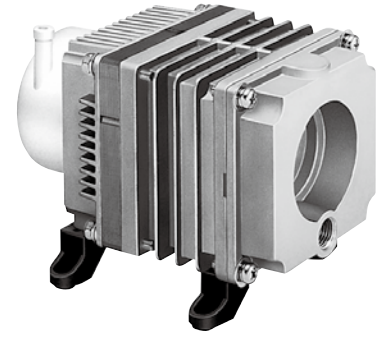


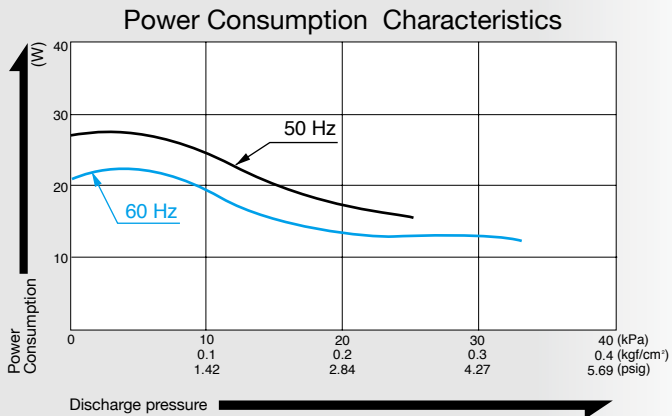
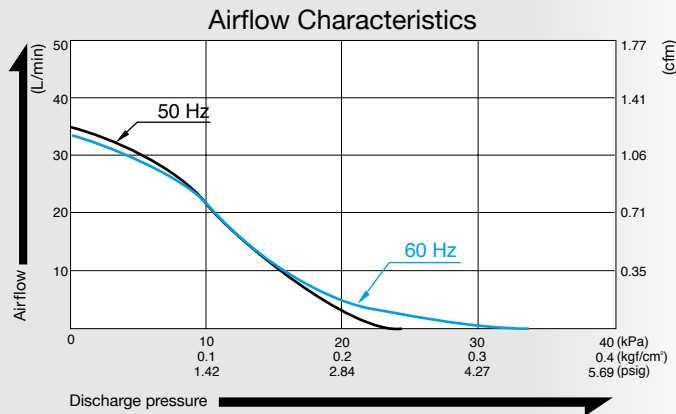
Compressor

Model **ACO201A**

115 V is made to order



Airflow & Power Consumption

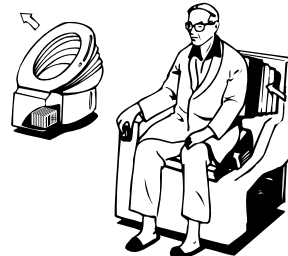


Specifications

Rated Pressure	10 kPa (0.1 kgf/cm ²) 0.1 bar 1.42 psig	
Rated Airflow	20 L/min 0.71 cfm	
Maximum Pressure	20 kPa (0.2 kgf/cm ²) 0.2 bar 2.84 psig	
Rated Voltage	115 V AC	230 V AC
Power Consumption	19 W	23 W
Rated Frequency	60 Hz	50 Hz
Rated Performance	6,000 hours	
Outlet	ISO Rc 1/4	
Duty Cycle	Continuous	
Coil Insulation Class	E or its equivalent and B for UL	
Mounting Dimensions	73 (L) x 88 (W) mm 2 - 7/8" (L) x 3 - 15/32" (W)	
Weight	1.5 kg 3.3 Lbs	
Leadwire Length	200 mm 7 - 7/8"	

Application Examples

Seat Lifter



Bed Sore Prevention Mattress



External Dimensions (Unit: mm)

