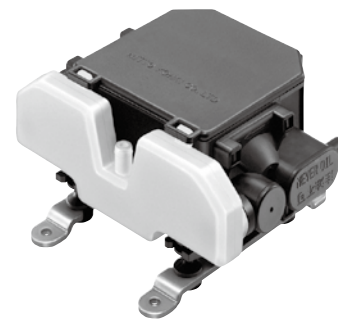


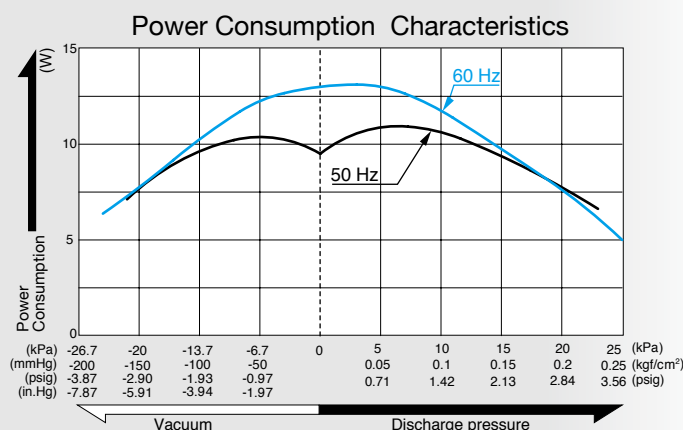
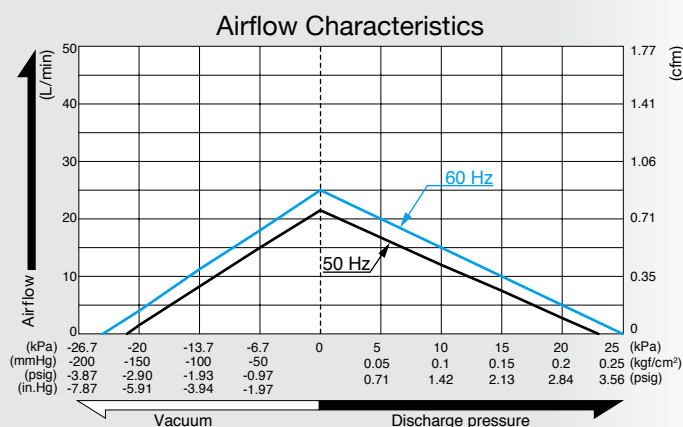
Compressor and Vacuum Pump

Model VC0101

Dual Type



Airflow & Power Consumption

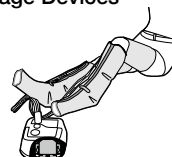


Specifications

Rated Pressure	10 kPa (0.1 kgf/cm ²) 0.1 bar 1.42 psig	
Rated Airflow	10 L/min 0.35 cfm	
Rated Voltage	120 V AC	230 V AC
Maximum Pressure	18 kPa (0.18 kgf/cm ²) 0.18 bar 2.56 psig	15 kPa (0.15 kgf/cm ²) 0.15 bar 2.13 psig
Attainable Vacuum	-18.7 kPa (-140 mmHg) -187 mbar -5.51 in.Hg	-10 kPa (-76 mmHg) -100 mbar -2.95 in.Hg
Working Pressure Range	-18.7 kPa to 18 kPa (-140 mmHg to 0.18 kgf/cm ²) -187 mbar to 0.18 bar -5.51 in.Hg to 2.56 psig	-10 kPa to 15 kPa (-76 mmHg to 0.15 kgf/cm ²) -100 mbar to 0.15 bar -2.95 in.Hg to 2.13 psig
Power Consumption	11 W	
Rated Frequency	60 Hz	50 Hz
Rated Performance	5,000 hours	
Inlet	7.5 mm O.D. hose barb	
Outlet	7.5 mm O.D. hose barb	
Duty Cycle	Continuous	
Coil Insulation Class	B for 120 V or its equivalent	B for 230 V or its equivalent
Mounting Dimensions	66 (L) x 100 (W) mm 2 - 19/32" (L) x 2 - 15/16" (W)	
Weight	0.82 kg 1.81 Lbs	
Leadwire Length	200 mm 11 - 13/16"	

Application Examples

Massage Devices



Bedsore Prevention Mattress



External Dimensions (Unit: mm)

