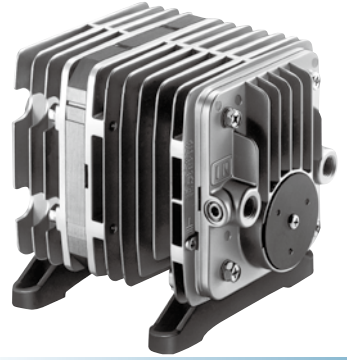
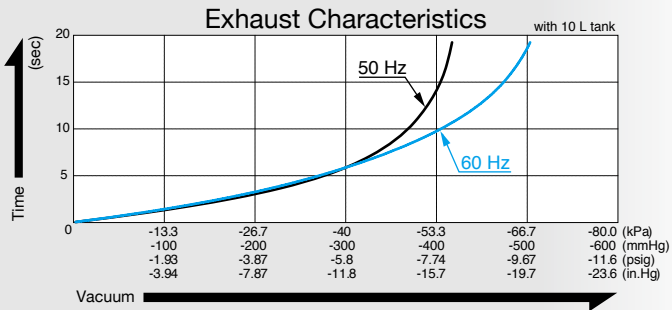
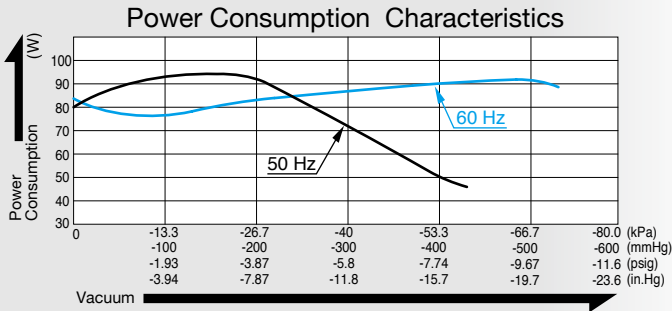
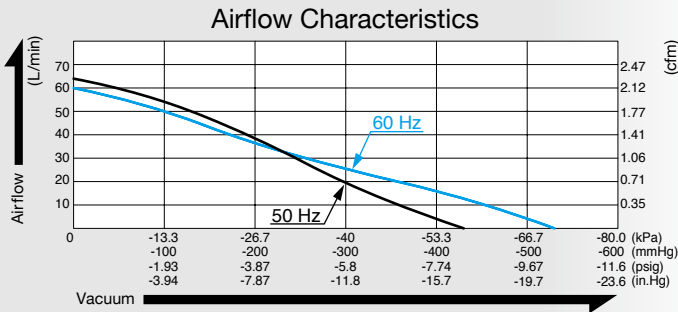


Vacuum Pump

Model VP0940



Airflow & Power Consumption



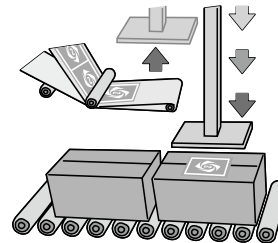
Specifications

Attainable Vacuum *1	-53.3 kPa (-400 mmHg) -533 mbar -15.7 in. Hg	
Free Air Displacement	60 L/min 2.12 cfm	
Rated Voltage	115 V AC	230 V AC
Power Consumption	95 W	
Rated Frequency	60 Hz	50 Hz
Rated Performance	10,000 hours	
Inlet	ISO Rc 1/4	
Outlet	ISO Rc 1/4	
Duty Cycle	Continuous	
Coil Insulation Class	B or its equivalent and B for UL	
Mounting Dimensions	102 (L) x 130 (W) mm 4 - 1/64" (L) x 5 - 1/8" (W)	
Weight	4.55 kg 10.0 Lbs	
Leadwire Length	300 mm 11 - 13/16"	320 mm 12 - 19/32"

*1: Operations at higher than -53.3 kPa need an additional leak valve or relief valve on the inlet piping.

Application Examples

Label Sticking Machine



External Dimensions (Unit: mm)

