

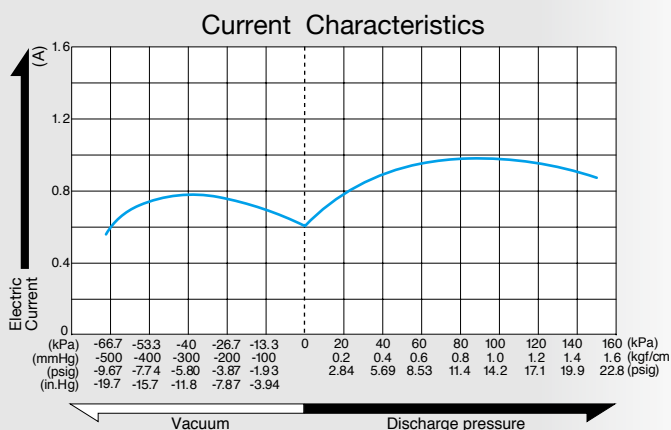
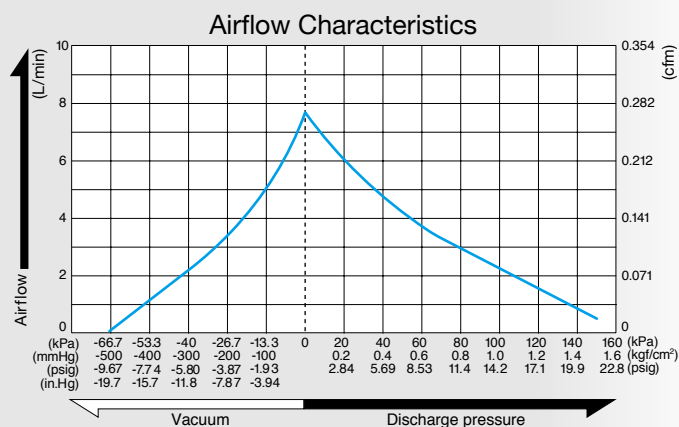
Compressor and Vacuum Pump

Model **DP0110-X1**

Brushless DC Motor 12 V DC



Airflow & Power Consumption

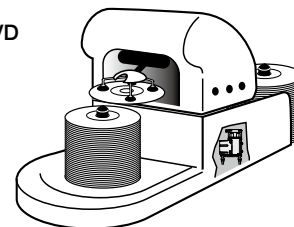


Specifications

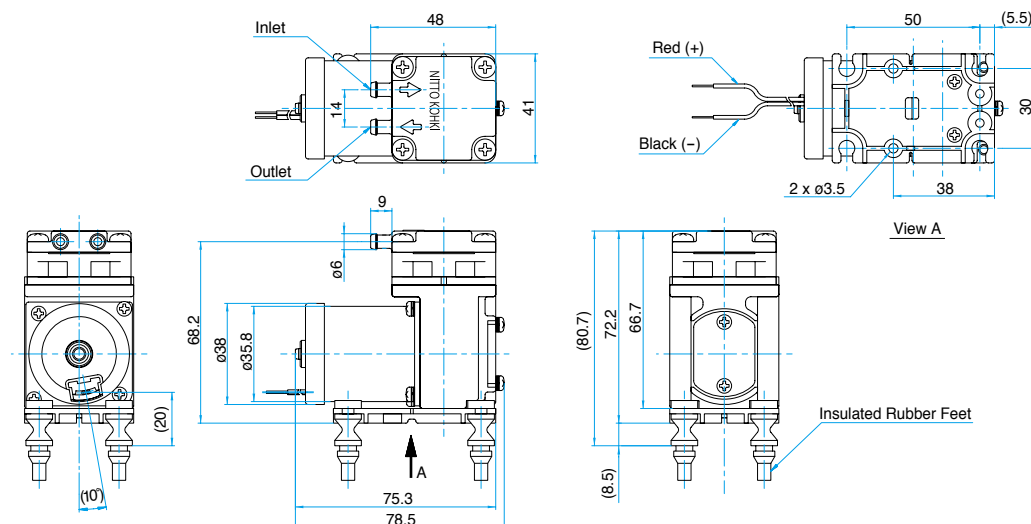
Attainable Vacuum	-66.7 kPa (-500 mmHg) -667 mbar -19.7 in.Hg
Free Air Displacement	7.5 L/min 0.265 cfm
Rated Voltage	12 V DC
Maximum Pressure	150 kPa (1.5 kgf/cm ²) 1.5 bar 21.3 psig
Maximum Current	1.2 A or less
Duty Cycle	Continuous
Rated Performance (MTTF)	8,000 hours
Inlet	6 mm O.D. straight barb
Outlet	6 mm O.D. straight barb
Coil Insulation Class	A or its equivalent
Mounting Dimensions	50 (L) x 30 (W) mm 1 - 31/32" (L) x 1 - 3/16" (W)
Weight	0.30 kg 0.66 Lbs
Leadwire Length	360 mm 14 - 11/64"

Application Examples

Vacuum pick up and place devices for CD & DVD



External Dimensions (Unit: mm)



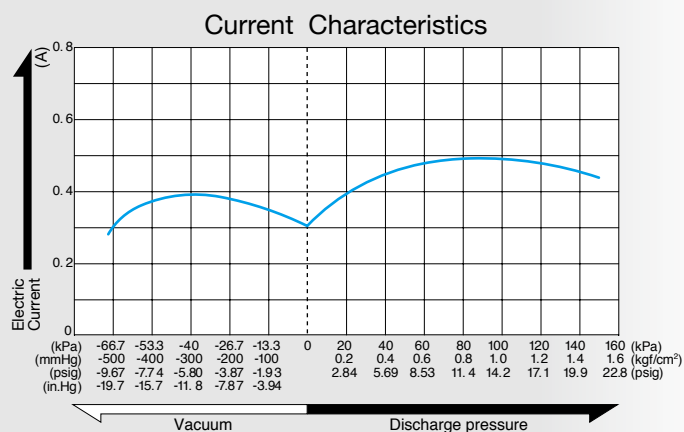
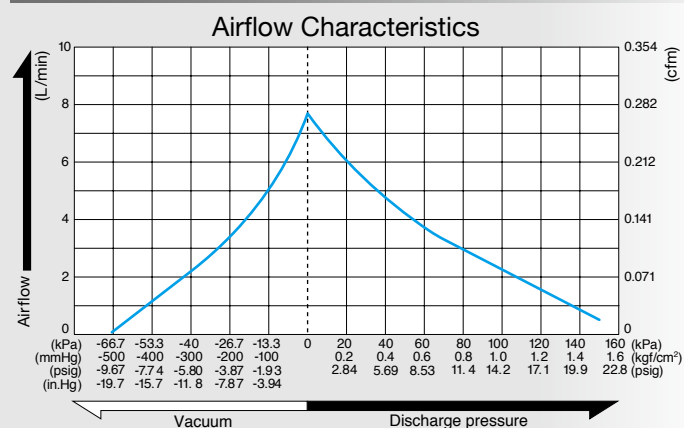
Compressor and Vacuum Pump

Model **DP0110-Y1**

Brushless DC Motor 24 V DC



Airflow & Power Consumption

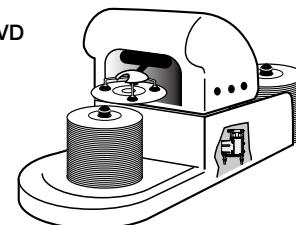


Specifications

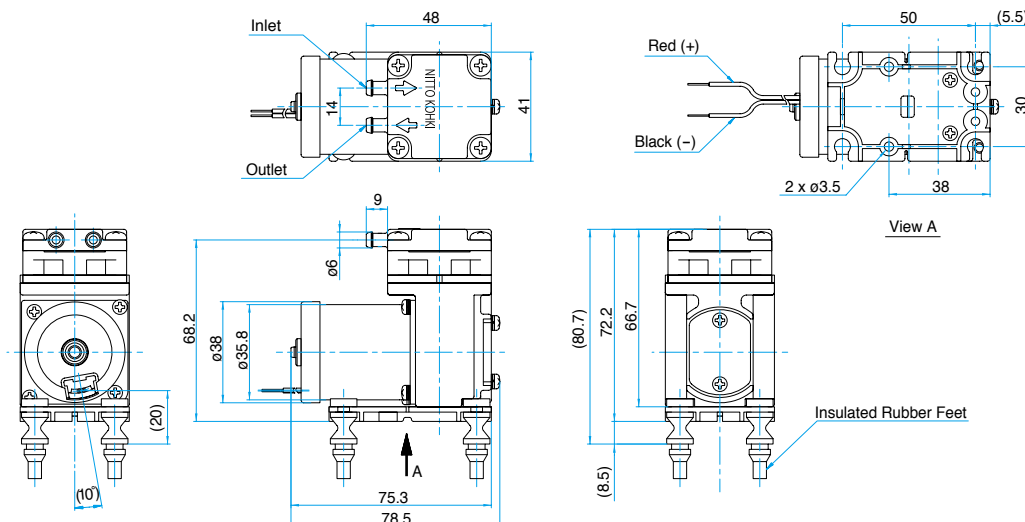
Attainable Vacuum	-66.7 kPa (-500 mmHg) -667 mbar -19.7 in.Hg
Free Air Displacement	7.5 L/min 0.265 cfm
Rated Voltage	24 V DC
Maximum Pressure	150 kPa (1.5 kgf/cm ²) 1.5 bar 21.3 psig
Maximum Current	0.6 A or less
Duty Cycle	Continuous
Rated Performance (MTTF)	8,000 hours
Inlet	6 mm O.D. straight barb
Outlet	6 mm O.D. straight barb
Coil Insulation Class	A or its equivalent
Mounting Dimensions	50 (L) x 30 (W) mm 1 - 31/32" (L) x 1 - 3/16" (W)
Weight	0.30 kg 0.66 Lbs
Leadwire Length	360 mm 14 - 11/64"

Application Examples

Vacuum pick up and place devices for CD & DVD



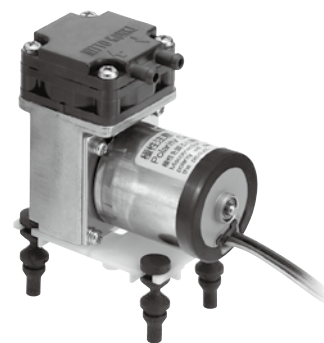
External Dimensions (Unit: mm)



Compressor and Vacuum Pump

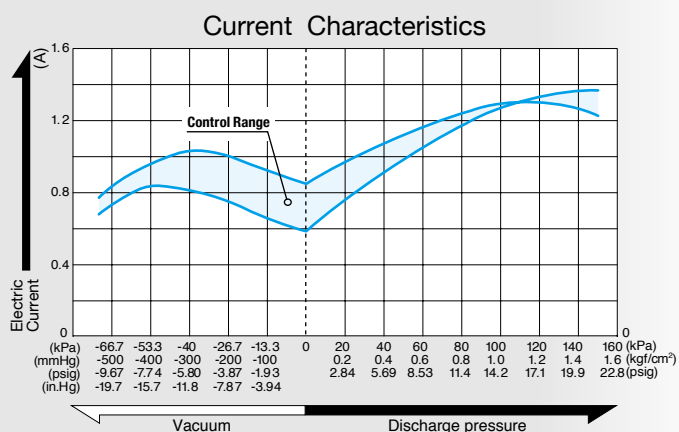
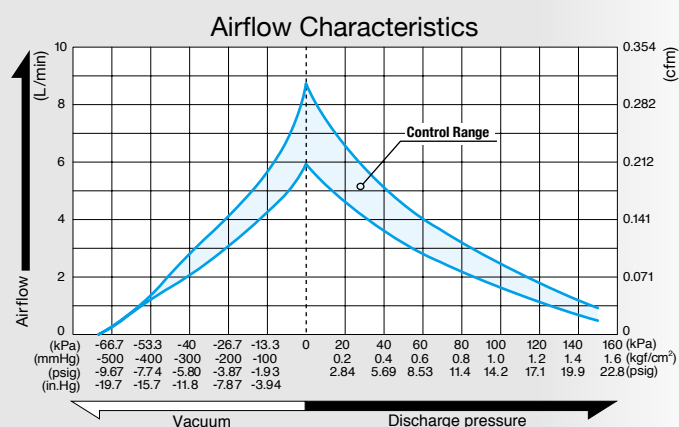
Model **DP0110-X3**

PWM controlled model



Brushless DC Motor **12 V DC**

Airflow & Power Consumption

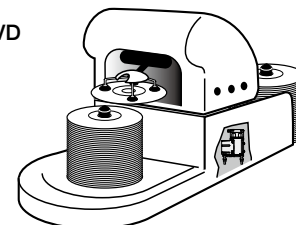


Specifications

Attainable Vacuum	-66.7 kPa (-500 mmHg) -667 mbar -19.7 in.Hg
Free Air Displacement	7.5 L/min 0.265 cfm
Rated Voltage	12 V DC
Maximum Pressure	150 kPa (1.5 kgf/cm ²) 1.5 bar 21.3 psig
Maximum Current	1.4 A or less
Duty Cycle	Continuous
Rated Performance (MTTF)	8,000 hours
Control(PWM)	2.5 - 5 V, 15 - 25 kHz, Duty cycle 80 - 100%
Inlet	6 mm O.D. straight barb
Outlet	6 mm O.D. straight barb
Coil Insulation Class	A or its equivalent
Mounting Dimensions	50 (L) x 30 (W) mm 1 - 31/32" (L) x 1 - 3/16" (W)
Weight	0.30 kg 0.66 Lbs
Leadwire Length	180 mm 7 - 3/32"

Application Examples

Vacuum pick up and place devices for CD & DVD



External Dimensions (Unit: mm)

Mounting Dimension of Rubber Foot:

Plate thickness : t = 2 mm,
Hole diameter : $\phi 6 \pm 0.1$ mm
(Rubber feet come with the product as accessories.)

