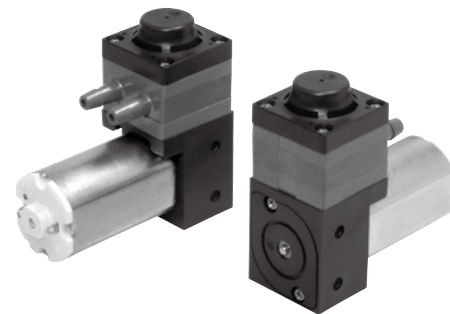


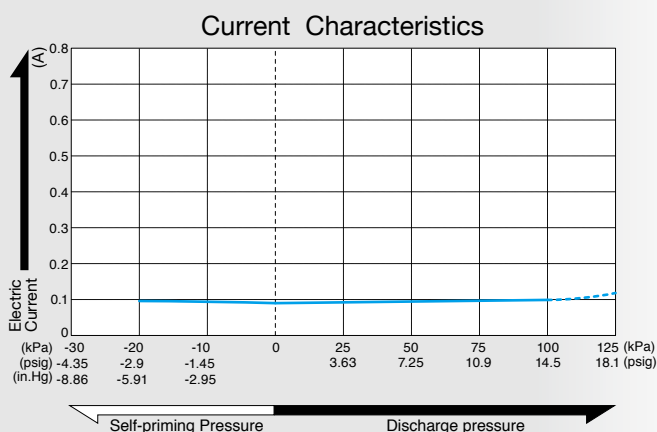
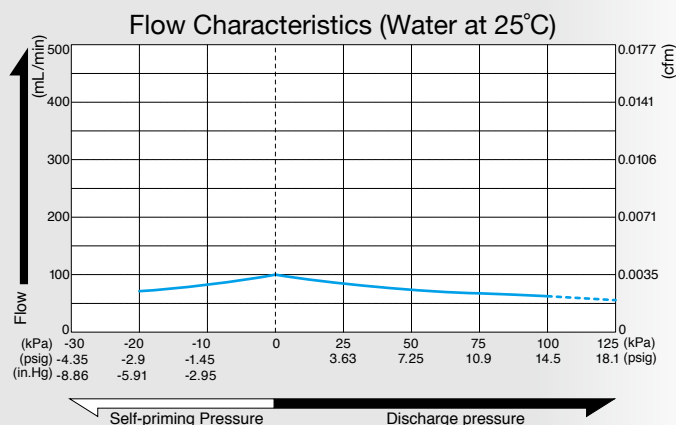
DC Liquid Pump

Model **DPE-100**

Brush DC Motor 24 V DC



Flow & Electric Current



Specifications

Rated Voltage	24 V DC
Flow Rate *1	100 mL/min 0.0035 cfm
Working Pressure Range	0 to 100 kPa 0 to 1 bar 0 to 14.2 psig
Maximum Pressure *2	300 kPa 3 bar 42.7 psig
Maximum Current	100 mA
Duty Cycle	Continuous
Rated Performance (MTTF)	500 hours
Self-priming Pressure *1	20 kPa 0.2 bar 2.84 psig
Inlet	4.7 mm O.D. straight barb
Outlet	4.7 mm O.D. straight barb
Insulation Classification	E class equivalent
Mounting Dimensions	9.5 (L) x 17 (W) mm 3/8" (L) x 43/64" (W)
Weight	67 g 0.148 Lbs
Motor	Brush DC Motor

*1. When the check valve is hardened due to low liquid temperature, self-priming performance and flow rate will go down.
*2. Restarting pumps with flow passage closed is impossible.

Material of wetted parts and applicable fluids

Model	Cylinder Head	Head Cover	Diaphragm	Valve	O-ring	Applicable fluids
DPE-100-2E	PA Polyamide(Nylon)		PTFE	EPDM Ethylene-propylene rubber		Sodium hydroxide, Citric acid Ammonia water, Caustic potash
DPE-100-2G				FKM Fluoro rubber		Ethanol, Ethylene glycol Sodium carbonate, mineral oil
DPE-100-7G	PPS Polyphenylene sulfide		Polytetrafluoroethylene			Xylene, Carbon tetrachloride Trichloroethylene, Silicon oils
DPE-100-7P						FFKM Perfluoroelastomer

Application Examples

- Liquid analytical instruments e.g. medical, food, water treatment & environmental.
- Liquid transport within filtration, sampling, sterilizers and washers.
- Ink transport within industrial ink-jet printers.

External Dimensions (Unit: mm)

