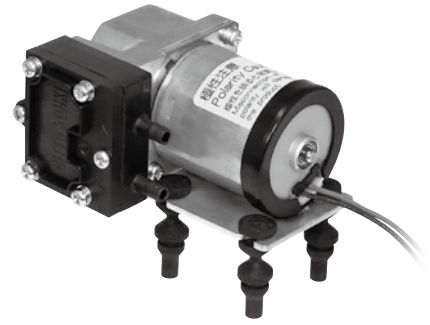


# Compressor

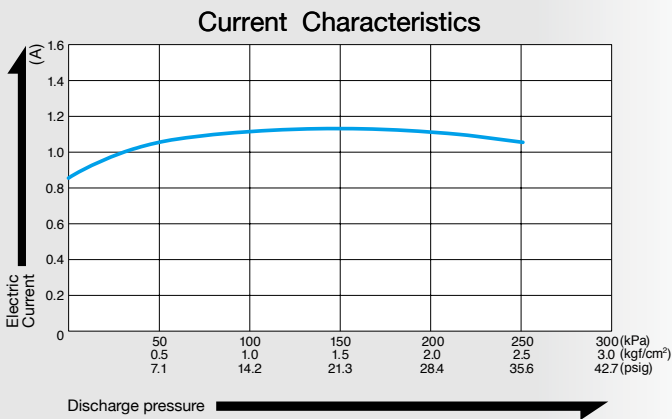
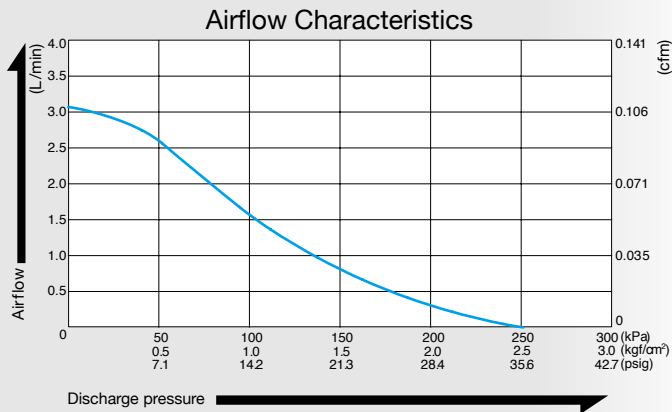


## Model **DPA0105-X1**

Brushless DC Motor **12 V DC**



### Airflow & Power Consumption

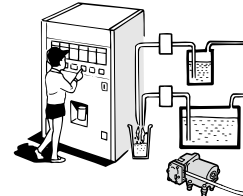


### Specifications

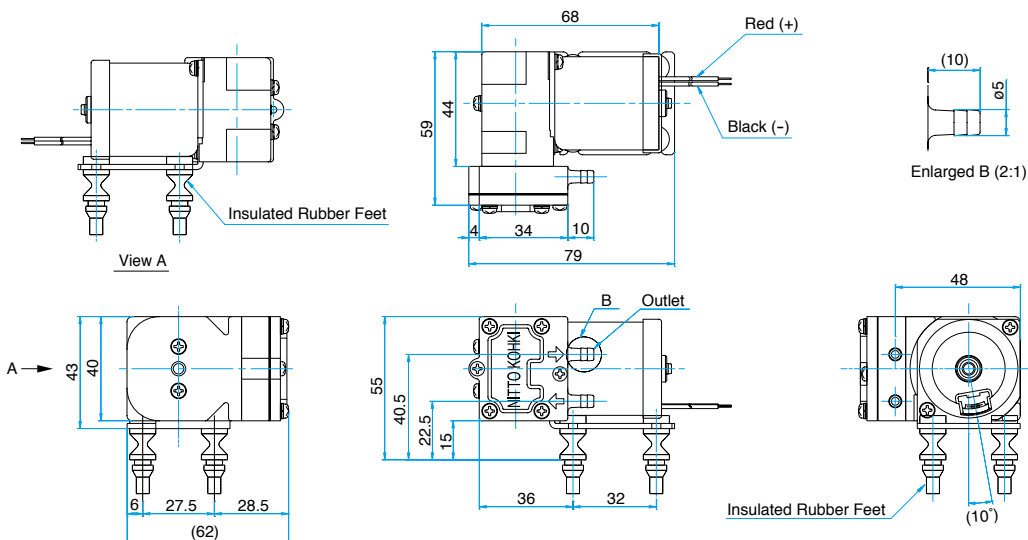
Free Air Displacement	2.8 L/min 0.099 cfm
Rated Voltage	12 V DC
Maximum Pressure	220 kPa (2.2 kgf/cm <sup>2</sup> ) 2.2 bar 31.3 psig
Maximum Current	1.4 A
Duty Cycle	Continuous
Working Pressure Range	0 to 100 kPa (0 to 1 kgf/cm <sup>2</sup> ) 0 to 1 bar 0 to 14.2 psig
Rated Performance (MTTF)	5,000 hours
Inlet	5 mm O.D. straight barb
Outlet	5 mm O.D. straight barb
Coil Insulation Class	A or its equivalent
Mounting Dimensions	32 (L) x 27.5 (W) mm 1 - 9/32" (L) x 1 - 5/64" (W)
Weight	0.3 kg 0.66 Lbs
Leadwire Length	360 mm 14 - 11/64"

### Application Examples

#### Vending Machines

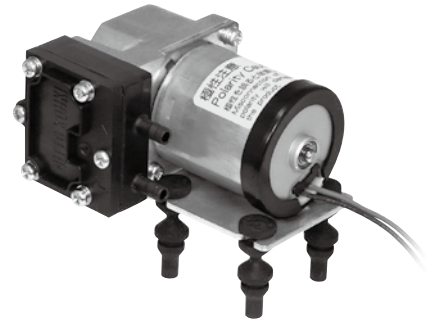


### External Dimensions (Unit: mm)



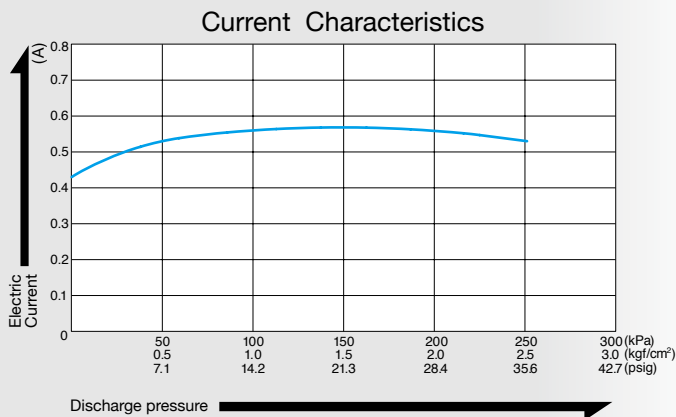
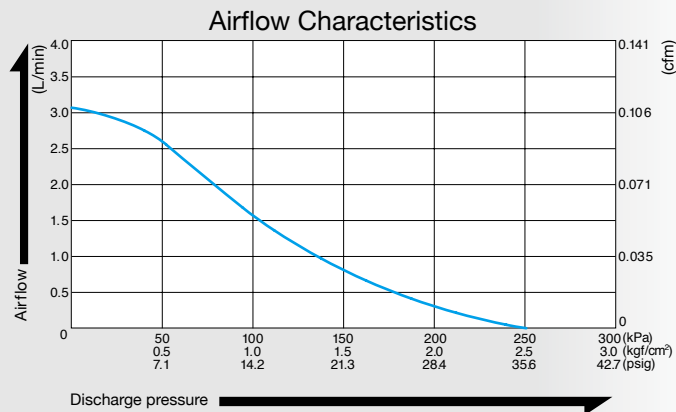
# Compressor

## Model **DPA0105-Y1**



**Brushless DC Motor 24 V DC**

### Airflow & Power Consumption

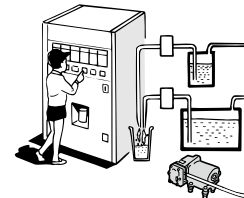


### Specifications

Free Air Displacement	2.8 L/min 0.099 cfm
Rated Voltage	24 V DC
Maximum Pressure	220 kPa (2.2 kgf/cm <sup>2</sup> ) 2.2 bar 31.3 psig
Maximum Current	0.7 A
Duty Cycle	Continuous
Working Pressure Range	0 to 100 kPa (0 to 1 kgf/cm <sup>2</sup> ) 0 to 1 bar 0 to 14.2 psig
Rated Performance (MTTF)	5,000 hours
Inlet	5 mm O.D. straight barb
Outlet	5 mm O.D. straight barb
Coil Insulation Class	A or its equivalent
Mounting Dimensions	32 (L) x 27.5 (W) mm 1 - 9/32" (L) x 1 - 5/64" (W)
Weight	0.3 kg 0.66 Lbs
Leadwire Length	360 mm 14 - 11/64"

### Application Examples

#### Vending Machines



### External Dimensions (Unit: mm)

