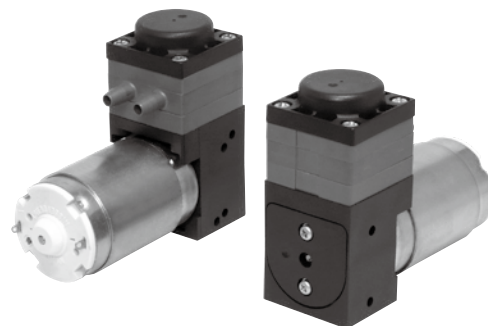


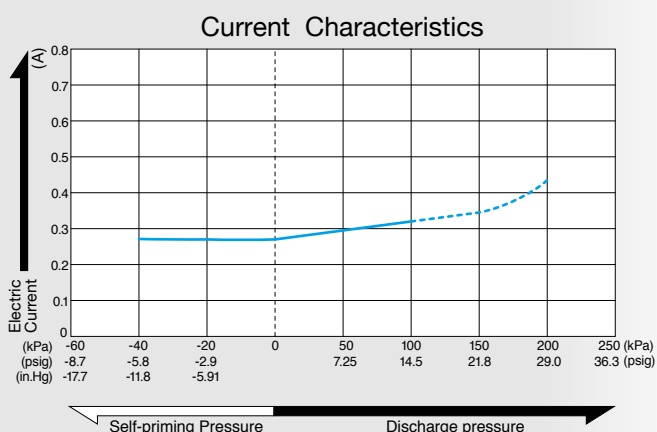
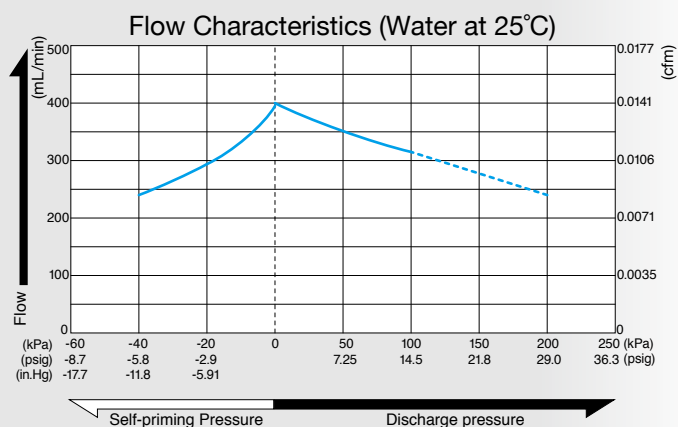
DC Liquid Pump

Model **DPE-400**

Brush DC Motor 24 V DC



Flow & Electric Current



Specifications

Rated Voltage	24 V DC
Flow Rate *1	400 mL/min 0.0141 cfm
Working Pressure Range	0 to 100 kPa 0 to 1 bar 0 to 14.2 psig
Maximum Pressure *2	300 kPa 3 bar 42.7 psig
Maximum Current	345 mA
Duty Cycle	Continuous
Rated Performance (MTTF)	500 hours
Self-priming Pressure *1	40 kPa 0.4 bar 5.69 psig
Inlet	5.4 mm O.D. straight barb
Outlet	5.4 mm O.D. straight barb
Insulation Classification	F class equivalent
Mounting Dimensions	19 (L) x 26 (W) mm 3/4"(L) x 1 - 1/32"(W)
Weight	187 g 0.412 Lbs
Motor	Brush DC Motor

*1. When the check valve is hardened due to low liquid temperature, self-priming performance and flow rate will go down.
*2. Restarting pumps with flow passage closed is impossible.

Material of wetted parts and applicable fluids

Model	Cylinder Head	Head Cover	Diaphragm	Valve	O-ring	Applicable fluids
DPE-400-2E	PA Polyamide(Nylon)		PTFE	EPDM Ethylene-propylene rubber		Sodium hydroxide, Citric acid Ammonia water, Caustic potash
DPE-400-2G				FKM Fluoro rubber		Ethanol, Ethylene glycol Sodium carbonate, mineral oil
DPE-400-7G	PPS Polyphenylene sulfide		Polytetrafluoroethylene	FFKM Perfluoroelastomer		Xylene, Carbon tetrachloride Trichloroethylene, Silicon oils
DPE-400-7P						

Application Examples

- Liquid analytical instruments e.g. medical, food, water treatment & environmental.
- Liquid transport within filtration, sampling, sterilizers and washers.
- Ink transport within industrial ink-jet printers.

External Dimensions (Unit: mm)

