

ATRAACE WOJ-3200

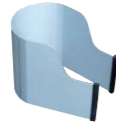
Manual feed

Specification

Model		WOJ-3200		
Power Source (Single Phase)		220~240 V AC 50/60Hz		
Electric Drill	Rated Power Consumption	W	950	
	Rated Current	A	4.3	
	No Load Speed	min ⁻¹ (rpm)	870	
Magnet Power Consumption		W	70	
Hole-cutting Capacity		Cutter	Hole Diameter	Plate Thickness
One-touch type JETBROACH			17.5 to 32 mm	9 to 50 mm
Magnet Holding Power		N (kgf)	9000 (918)	
Magnet Dimensions		mm	99 x 177	
Mass (Weight)		kg	13	

Standard Accessories

• Guard Assy: 1 set



- Pilot Pin 08050 : 1 pc.
- Hex Socket Screw Key 3mm : 1 pc.
- Hex Socket Screw Key 6mm : 1 pc.
- Spanner 8 x 10 : 1 pc.
- Safety Strap : 1 pc.



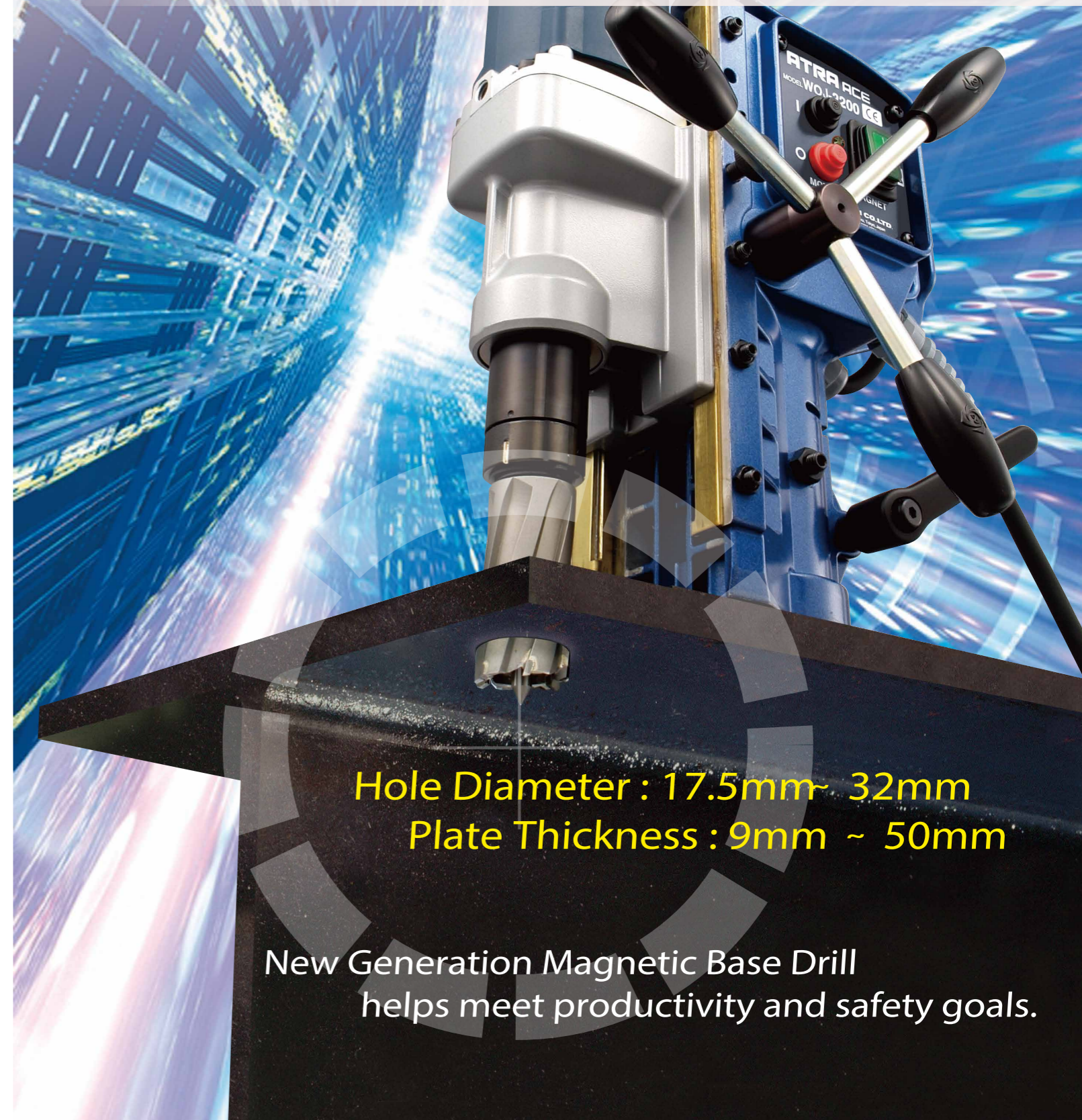
Cat.No. Tk109

NEW

Portable Magnetic Base Drilling Machine

ATRAACE
Manual feed Model **WOJ-3200**

Designed to use Jetbroach Carbide Tipped Annular Cutters



JETBROACH CUTTERS

Combination of Pilot Pins & Tungsten Carbide Tipped Annular Cutters

Pilot Pin	JETBROACH CUTTERS	Dia. mm	Part No.	
			35L Depth 35mm	50L Depth 50mm
08035 P/N:TJ15859 For One-touch type JETBROACH Dia.17.5 ~ 32 Depth 35mm 	 One-touchType (3/4" shank)	17.5	TK00301	TK00380
		18	TK00302	TK00381
		19	TK00304	TK00382
		19.5	TK00305	TK00383
		20	TK00306	TK00384
		20.5	TK00307	TK00385
		21	TK00308	TK00386
		21.5	TK00309	TK00387
		22	TK00310	TK00388
		22.5	TK00311	TK00389
		23	TK00312	TK00390
		23.5	TK00313	TK00391
		24	TK00314	TK00392
		24.5	TK00315	TK00393
		25	TK00316	TK00394
		26	TK00317	TK00395
		26.5	TK00318	TK00396
27	TK00319	TK00397		
28	TK00320	TK00398		
29	TK00321	TK00399		
30	TK00322	TK00400		
31	TK00323	TK00401		
32	TK00324	TK00402		

NITTO Head Office
 9-4, Nakaikegami 2-chome,
 Ohta-ku, Tokyo 146-8555 Japan
 NITTO KOHKI CO.,LTD. Phone: +81-3-3755-1111 Fax: +81-3-3753-8791

▶ E-mail : overseas@nitto-kohki.co.jp
 ▶ URL : www.nitto-kohki.co.jp

Distributed by

▶ Specifications and designs are subject to change at any time without notice.

Hole Diameter : 17.5mm ~ 32mm
 Plate Thickness : 9mm ~ 50mm

New Generation Magnetic Base Drill
 helps meet productivity and safety goals.

ATRAACE WOJ-3200

Manual feed Model

Designed to use Jetbroach Carbide Tipped Annular Cutters

Fresh compact design with advanced safety system answers the customer's needs.

THE WORLD'S FIRST MANUAL FEED WITH "SMART-STOP / RAPID-RESTART" TECHNOLOGY

This new feature is a breakthrough in the Manual drill industry. Formerly only found on high end Nitto Kohki Automatic drills, this technology displays the current drill status via the LED Load Indicator. Customers will experience a cutting edge drill management system designed solely around saving time and money in replacement parts and cutters in addition to reducing user fatigue and downtime.

FAIL-SAFE RESTART

In the event of a power loss while drilling, the drill will not restart even after power is resupplied. The motor "Start" switch is required to be depressed to resume drilling.

MAGNET OPEN-CIRCUIT SENSOR

The drill will not start if the magnet fails to energize due to an open field or faulty wire.

REVERSIBLE FEED HANDLES

Feed handles can be positioned on the right or left hand side for ease of drilling and mounting in confined spaces.

BODY HEIGHT ADJUSTMENT

Loosening the pillar clamp allows the complete frame to be lifted up to a maximum of 60mm for specific drilling. The use of Jetbroach cutters require the frame to be at the lowest position, while twist bit drilling required the appropriate amount of elevation to be adjusted for safe operation. The pillar clamp is required to be tightened before safe drilling may take place. **Note:** Always engage the magnet before adjusting the body height.

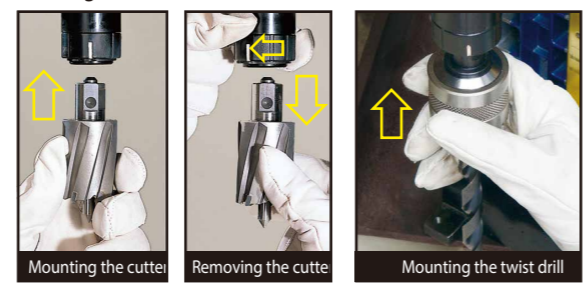


Optional CHIP BREAKER

Optional chip breaker helps prevent the cutter from plugging the hole with chip debris, causing some false overloads and cutter life loss.

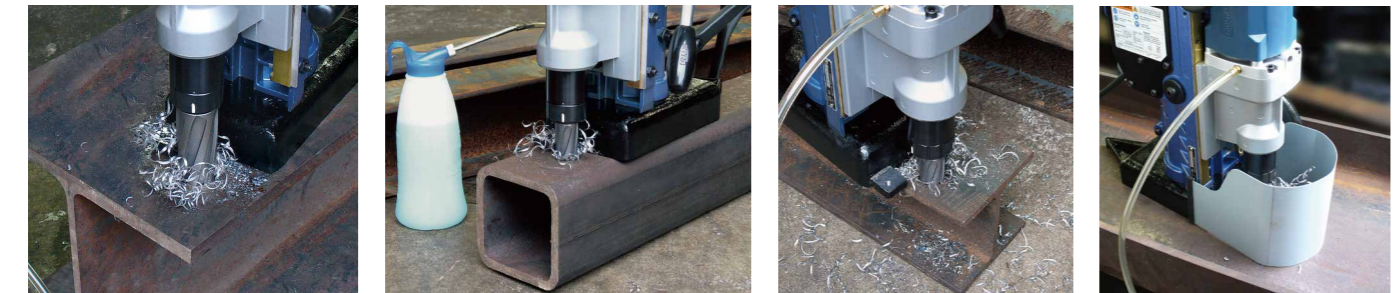
ONE-TOUCH CUTTER REPLACEMENT

Our original self-centering tool-less chuck is quick and easy to change cutters with little downtime.



COMMON PLACE APPLICATIONS

On-site hole cutting in steel plates, H-Beams, shaped bars, framework, shipbuilding, bridge construction and repair, steel reinforcements, and many other metal working and construction jobs.



Portable Magnetic Base Drilling Machine

Optional JETBROACH CARBIDE TIPPED ANNULAR CUTTERS

Original Jetbroach cutters drastically shorten drilling time when compared to similar sized conventional twist drills.



Optional ONE-TOUCH ADAPTER

Optional One-Touch adapter allows the use of up to 13mm twist drills to be used in the original arbor.



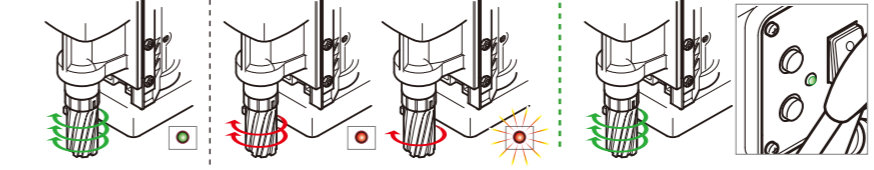
Optional JET OILING SYSTEM

Optional Jet Oiling System for use with all drilling applications and types of cutters to extend cutter life and increase hole output.



Load detector with "Smart-Stop/Rapid Restart" technology

As the drilling load increases, the load indicator will change in color from green to orange to red. In addition, if excessive feeding force is applied, the load indicator will rapidly blink red and the rotation of the drill motor will slow down and temporarily stop. If the load is released while the load indicator is blinking red, the drill motor will resume its rotation.



Safety mode

