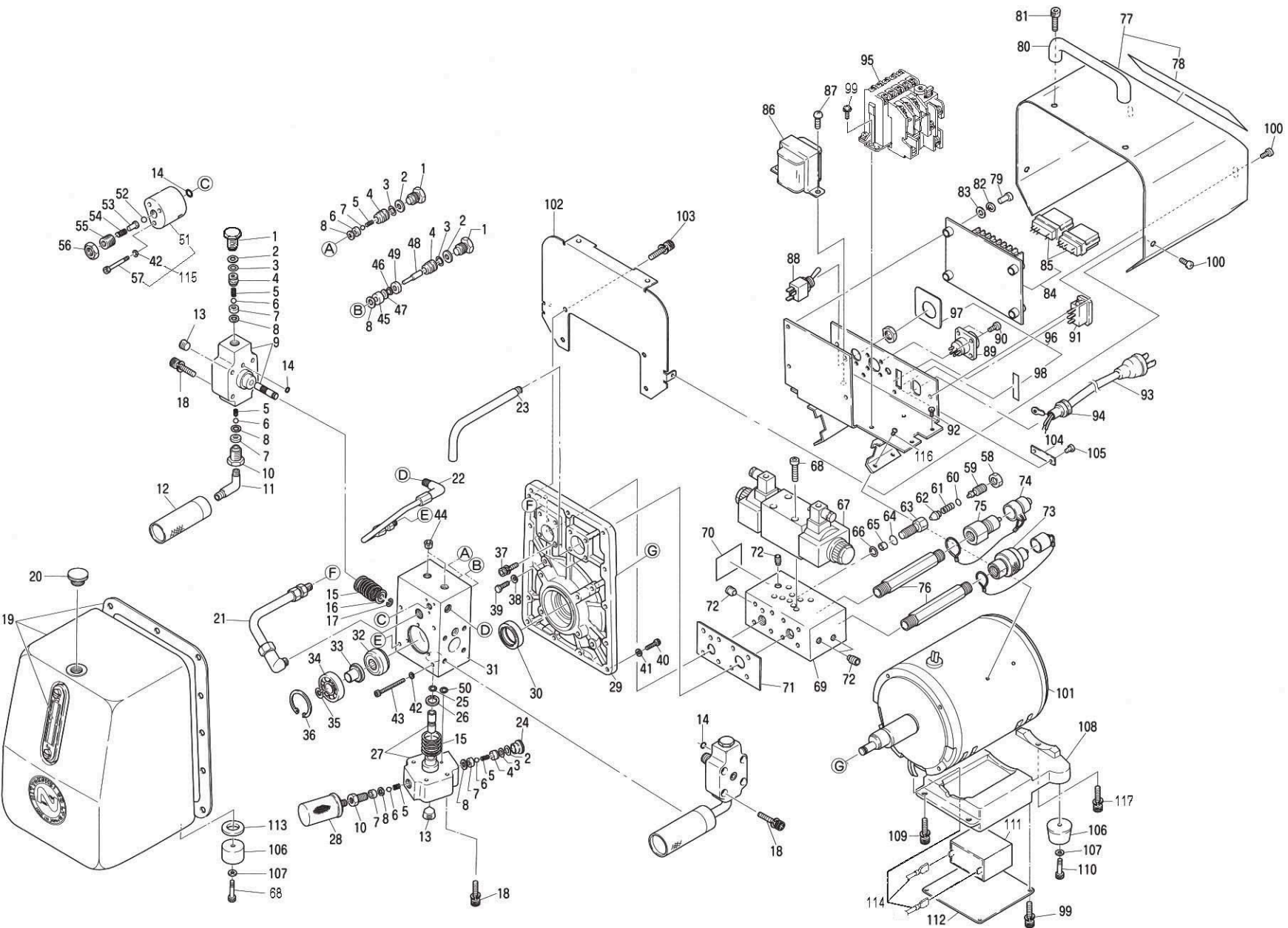


**WARNING**

This diagram is for your reference only. Do not attempt to service or repair the Tool. Do not take the Tool apart. Contact an authorized Nitto dealer for all service and repair of the Tool. Improper service and repair can cause accidents and service injuries. Never attempt to modify the Tool. Never attempt service or repair the Tool yourself.



## 9 HPD-05 PARTS LIST

The part numbers with ( ) are included in the Ass'y parts written above them.

No.	Parts No.	Parts Name	Q'ty	Price
1	TP05874	Check Set Plug	4	
2	TP05873	Back-up Ring P-10 T2	5	
3	TP05872	O-Ring P-10	5	
4	TP05871	Delivery Valve	5	
5	TP05870	Spring 0.3 × 5 × 7	7	
6	CP00800	Ball 1/4	7	
7	TP05869	Valve Seat	7	
8	TP05868	Packing	8	
9	TA9A586	Cylinder Piston Sub Ass'y	2sets	
10	TP05875	Suction Valve	3	
11	TP05876	Elbow PT1/8 × PF1/4	2	
12	TP05877	Filter	2	
13	TP05863	Hex. Socket Set Screw PT1/4	3	
14	TP05878	O-Ring P-8	3	
15	TP05865	Piston Spring	3	
16	TP05866	Spring Seat	2	
17	TP05867	Retaining Ring E-64	2	
18	TQ03341	Hex. Socket Head Cap Screw 6 × 30	12	
19	TA97817	Oil Tank Ass'y	1set	
21	TA92456	Steel Pipe Ass'y	1set	
22	TA94198	Steel Pipe Ass'y	1set	
23	TQ03234	Drain Pipe	1	
24	TP07963	Check Set Plug	1	
25	TP07962	Retaining Ring WR-11	1	
26	TP07961	Spring Seat	1	
27	TA9A603	(L) Cylinder Piston Sub Ass'y	1set	
28	TP07964	Suction Filter	1	
29	TQ03233	Bracket	1	
30	TP05856	Oil Seal S25 × 38 × 8	1	
31	TQ03232	Pump Body	1	
32	TP09671	Yoke Type Track Roller	1	
33	TP09672	Distance Collar	1	
34	TP05928	Ball Bearing	1	
35	TP09673	Retaining Ring E10	1	
36	CP01086	Internal Retaining Ring C-42	1	
37	TQ03340	Hex. Socket Head Cap Screw 6 × 25	8	
38	TP05853	Seal Washer W5	4	
39	TP13247	Hex. Head Bolt 5 × 22	4	
40	TP02863	Hex. Socket Head Cap Screw 5 × 20	13	
41	TP05950	Copper Washer	13	
42	TP00513	Spring Washer M5	4	
43	TP05857	Hex. Socket Head Cap Screw 5 × 70	4	
44	TP06597	Hex. Socket Set Screw PT1/8	2	
45	TP06616	Valve Sleeve	1	
46	TP06617	O-Ring P-6	1	
47	TP06618	Back-up Ring P-6 T2	1	

No.	Parts No.	Parts Name	Q'ty	Price
48	TP06619	Spool	1	
49	TP06620	Valve Sleeve Plate	1	
50	TP05949	O-Ring P-7	1	
52	TP06633	Ball 5/16	1	
53	TP07966	Ball Retainer	1	
54	TP07967	Spring 2 × 7 × 25.2	1	
55	TQ03407	Hex. Socket Set Screw with Flat Point 12 × 15	1	
56	TP05422	Hex. Nut M12	1	
58	TP14009	Hex. Nut M12 × 1	1	
59	TP14279	Adjust Screw	1	
60	TP11241	O-Ring P-7	1	
61	TP14269	Spring 7.4 × 20 × 2	1	
62	TA98852	Relief Valve Sub Ass'y	1	
63	TP14267	Relief Valve Body	1	
64	TP12010	O-Ring P-14	1	
65	TP14266	Relief Valve Seat	1	
66	TP14265	Copper Washer 6 × 16 × 0.8	1	
67	TQ03463	Solenoid Valve (115V)	1	
	TQ03464	Solenoid Valve (230V)	1	
68	TP06217	Hex. Socket Head CapScrew 6 × 25	6	
69	TQ03249	Manifold	1	
70	TQ02990	Label Caution Relief Valve	1	
71	TQ03248	Gasket	1	
72	TP06597	Hex. Socket Set Screw PT1/8	4	
73	CA94119	700R-3P Ass'y	1set	
74	CB09421	450B-3P-D Ass'y	1set	
75	CA82240	450B-3P Ass'y	1set	
76	TQ03238	Cupla Joint	2	
77	TB02491	Cover Ass'y (115V)	1set	
	TB02498	Cover Ass'y (230V)	1set	
78	(TQ03245)	Label Warning (115V)	1	
	(TQ03247)	Label Warning (230V)	1	
79	LP30251	Pan Head Screw 4 × 16	4	
82	TP04234	Spring Washer M4	4	
83	LP30299	Washer M4	4	
84	TB02393	Print Board	1set	
85	(TQ02621)	Relay G2R-2-S	2	
86	TQ03251	Transformer 115V/20V 0.3A (115V)	1	
	TQ03252	Transformer 230V/20V 0.3A (230V)	1	
87	LP31042	Pan Head Screw 3 × 6	2	
88	TQ03131	Switch ET105D12	1	
89	TB02726	Metal Consent Receptacle Ass'y	1set	
90	TP00056	Pan Head Screw 3 × 6	4	
91	TQ02893	Snap-in Switch LLA25L2	1	
92	LP08489	Pan Head Screw 4 × 6	1	
93	TA9A758	Cabtyre Cable Ass'y (115V)	1set	
	TB01207	Cabtyre Code Ass'y (230V)	1set	

No.	Parts No.	Parts Name	Q'ty	Price
94	TP01757	Cord Stopper SR-7P-2	1	
95	TB08829	Magnet Switch Ass'y (115V)	1set	
	TB08831	Magnet Switch Ass'y (230V)	1set	
96	TB02490	Switch Plate Sub Ass'y	1set	
97	(TQ03243)	Label Change Switch	1	
98	(TQ03244)	Label Power Supply	1	
99	TQ03193	Pan Head Screw 4 × 6	6	
100	LQ00190	Pan Head Screw 4 × 8	4	
101	TB09125	Motor Ass'y (115V)	1set	
	TB09126	Motor Ass'y (230V)	1set	
102	TQ03250	Partition	1	
103	TQ03327	Hex. Socket Head Cap Screw 5 × 10	4	
104	TP04769	Plate Serial Number	1	
105	TP05136	Drive Rivet No.2 × 4.8	2	
106	TP05925	Mount Foot	4	
107	TP05926	Washer 6.5 × 10 × 1	4	
108	TQ13226	Capacitor Box	1	
109	TQ03329	Hex. Socket Head Cap Screw 5 × 15	2	
110	TP10953	Hex. Socket Head Cap Screw 6 × 18	2	
111	TB09136	Capacitor Ass'y	1set	
112	TQ01322	Capacitor Cover	1	
113	TQ13224	Spacer 6.5 × 28 × 8	2	
114	TQ12568	Quick Disconnect	2	
115	TB09036	Unloader Valve Ass'y	1set	
42	(TP00513)	Spring Washer M5	3	
51	(TQ13301)	Unloader Valve	1	
57	(TP05882)	Hex. Socket Head Cap Screw 5 × 35	3	
116	LP30815	Pan Head Screw 4 X 6	4	
117	TQ03332	Hex. Socket Head Cap Screw 5 X 20	1	

### Accessories

No.	Parts No.	Parts Name	Q'ty	Price
20	TP05929	Oil Cap KRM-A1	1	
80	TQ03239	Hand Grip	1	
81	TP03086	Hex. Socket Head Cap Screw 6 × 20	2	
	UHA0032	1 Gallon Hydraulic Fluid	1	
	TP03249	Hex. Socket Screw Key 8	1	
	TP04004	Hex. Socket Screw Key 5	1	
	TQ03246	Instruction Manual	1	